



[Go to Product page](#)

Datasheet for ABIN1308512

KDELC1 Protein (AA 1-502) (GST tag)

1 Image

Overview

Quantity:	10 µg
Target:	KDELC1
Protein Characteristics:	AA 1-502
Origin:	Human
Source:	Wheat germ
Protein Type:	Recombinant
Purification tag / Conjugate:	This KDELC1 protein is labelled with GST tag.
Application:	ELISA, Western Blotting (WB), Affinity Purification (AP), Antibody Array (AA)

Product Details

Purpose:	KDELC1 (Human) Recombinant Protein (P01)
Sequence:	MFGTLLLYCF FLATVPALAE TGGERQLSPE KSEIWGPGLK ADVVLPARYF YIQAVDTSGN KFTSSPGEKV FQVKVSAPEE QFTRVGVQVL DRKDGSFIVR YRMYASYKNL KVEVKFQQQH VAKSPYILKG PVYHENCDCP LQDSAOWLRE MNCPETIAQI QRDLAHPAV DPEKIAVEIP KRFGRQSLC HYTLKDNKVY IKTHGEHVGF RIFMDAILLS LTRKVKMPDV ELFVNLGDWP LEKKKSNSNI HPIFSWCGST DSKDIVMPTY DLTDSVLETM GRVSLDMMSV QANTGPPWES KNSTAVWRGR DSRKERLELV KLSRKHEPEL DAAFTNFFFF KHDENLYGPI VKHISFFDFF KHKYQINIDG TVAAYRLPYL LVGDSVVLKQ DSIYYEHFYN ELQPWKHYIP VKSNLSDLLE KWKWAKDHDE EAKKIAKAGQ EFARNNLMGD DIFCYFFKLF QEYANLQVSE PQIREGMKRV EPQTEDDLFP CTCHRKKTGD EL
Characteristics:	Human KDELC1 full-length ORF (NP_076994.1, 1 a.a. - 502 a.a.) recombinant protein with GST-tag at N-terminal.

Product Details

Purification: in vitro wheat germ expression system

Target Details

Target: KDELC1

Alternative Name: KDELC1 ([KDELC1 Products](#))

Background: Full Gene Name: KDEL (Lys-Asp-Glu-Leu) containing 1
Synonyms: EP58,KDEL1,MGC5302

Gene ID: 79070

NCBI Accession: [NM_024089](#)

Pathways: [SARS-CoV-2 Protein Interactome](#)

Application Details

Application Notes: Optimal working dilution should be determined by the investigator.

Comment: Preparation method: in vitro, wheat germ expression system
Product Quality tested by: 12.5% SDS-PAGE Stained with Coomassie Blue.

Restrictions: For Research Use only

Handling

Buffer: 50 mM Tris-HCl, 10 mM reduced Glutathione, pH =8.0 in the elution buffer.

Handling Advice: Aliquot to avoid repeated freezing and thawing.

Storage: -80 °C

Storage Comment: Best use within three months from the date of receipt of this protein.

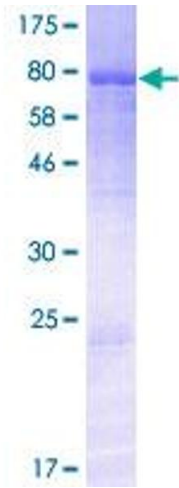


Image 1.