

Datasheet for ABIN1308514
KDELR1 Protein (AA 1-212) (GST tag)



[Go to Product page](#)

1 Image

Overview

Quantity:	10 µg
Target:	KDELR1
Protein Characteristics:	AA 1-212
Origin:	Human
Source:	Wheat germ
Protein Type:	Recombinant
Purification tag / Conjugate:	This KDELR1 protein is labelled with GST tag.
Application:	ELISA, Western Blotting (WB), Antibody Array (AA), Affinity Purification (AP)

Product Details

Purpose:	KDELR1 (Human) Recombinant Protein (P01)
Sequence:	MNLF RFLGDL SHLLAI LLLL LKIWKSRSCA GISGKSQVLF AVVFTARYLD LFTNYISLYN TCMKVVYIAC SFTTVWLIYS KFKATYDGNH DTFRVEFLVV PTAILAFLVN HDFTPLEILW TFSIYLESVA ILPQLFMVSK TGEAETITSH YLFALGVYRT LYLFNWIWRY HFEGFFDLIA IVAGLVQTVL YCDFFLYIT KVLKGGKLSL PA
Characteristics:	Human KDELR1 full-length ORF (NP_006792.1, 1 a.a. - 212 a.a.) recombinant protein with GST-tag at N-terminal.
Purification:	in vitro wheat germ expression system

Target Details

Target:	KDELR1
---------	--------

Target Details

Alternative Name:	KDEL1 (KDEL1 Products)
Background:	Gene: KDEL (Lys-Asp-Glu-Leu) endoplasmic reticulum protein retention receptor 1 Synonyms: ERD2, ERD2.1, HDEL, PM23
Gene ID:	10945
NCBI Accession:	NM_006801
Pathways:	Maintenance of Protein Location

Application Details

Application Notes:	Optimal working dilution should be determined by the investigator.
Restrictions:	For Research Use only

Handling

Buffer:	50 mM Tris-HCl, 10 mM reduced Glutathione, pH =8.0 in the elution buffer.
Handling Advice:	Aliquot to avoid repeated freezing and thawing.
Storage:	-80 °C
Storage Comment:	Best use within three months from the date of receipt of this protein.

Images

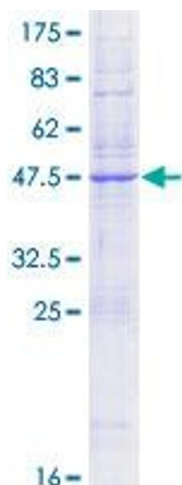


Image 1.