



[Go to Product page](#)

Datasheet for ABIN1308554

## KIAA0101 Protein (AA 1-111) (GST tag)

### 1 Image

#### Overview

Quantity:	10 µg
Target:	KIAA0101 (PAF)
Protein Characteristics:	AA 1-111
Origin:	Human
Source:	Wheat germ
Protein Type:	Recombinant
Purification tag / Conjugate:	This KIAA0101 protein is labelled with GST tag.
Application:	ELISA, Western Blotting (WB), Affinity Purification (AP), Antibody Array (AA)

#### Product Details

Purpose:	KIAA0101 (Human) Recombinant Protein (P01)
Sequence:	MVRTKADSVV GTYRKVVAAR APRKVLGSST SATNSTSVSS RKAENKYAGG NPVCVRPTPK WQKGIGEFFR LSPKDSEKEN QIPEEAGSSG LGKAKRKACP LQPDHTNDEK E
Characteristics:	Human KIAA0101 full-length ORF ( AAH05832, 1 a.a. - 111 a.a.) recombinant protein with GST-tag at N-terminal.
Purification:	in vitro wheat germ expression system

#### Target Details

Target:	KIAA0101 (PAF)
Alternative Name:	KIAA0101 ( <a href="#">PAF Products</a> )

## Target Details

Background:	Full Gene Name: KIAA0101 Synonyms: L5,NS5ATP9,OEATC-1,OEATC1,PAF,p15(PAF)
Gene ID:	9768
Pathways:	<a href="#">Chromatin Binding</a>

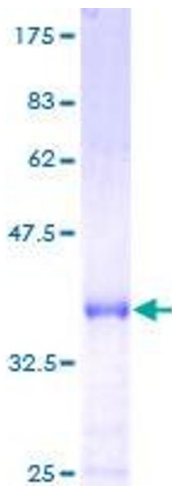
## Application Details

Application Notes:	Optimal working dilution should be determined by the investigator.
Comment:	Preparation method: in vitro, wheat germ expression system Product Quality tested by: 12.5% SDS-PAGE Stained with Coomassie Blue.
Restrictions:	For Research Use only

## Handling

Buffer:	50 mM Tris-HCl, 10 mM reduced Glutathione, pH =8.0 in the elution buffer.
Handling Advice:	Aliquot to avoid repeated freezing and thawing.
Storage:	-80 °C
Storage Comment:	Best use within three months from the date of receipt of this protein.

## Images



**Image 1.**