



[Go to Product page](#)

Datasheet for ABIN1308558

## Rubicon Protein (AA 1-375) (GST tag)

### 1 Image

#### Overview

Quantity:	10 µg
Target:	Rubicon (KIAA0226)
Protein Characteristics:	AA 1-375
Origin:	Human
Source:	Wheat germ
Protein Type:	Recombinant
Purification tag / Conjugate:	This Rubicon protein is labelled with GST tag.
Application:	ELISA, Western Blotting (WB), Affinity Purification (AP), Antibody Array (AA)

#### Product Details

Purpose:	KIAA0226 (Human) Recombinant Protein (P01)
Sequence:	<p>MQSILYHGLI RDQACRRQTD YWQFVKDIRW LSPHSALHVE KFISVHENDQ SSADGASERA VAELWLQHSL QYHCLSAQLR PLLGDRQYIR KFYTDAAFL SDAHVTAMLQ CLEAVEQNNP RLLAQIDASM FARKHESPLL VTKSQSLTAL PSSTYTPPNS YAQHSYFGSF SSLHQSV PNN GSERRSTSFP LSGPPRKPQE SRGHVSPAED QTIQAPPVSV SALARDSPLT PNEMSSSTLT SPIEASWVSS QNDSPGDASE GPEYLAIGNL DPRGRTASCQ SHSSNAESSS SNLFSSSSSQ KPDSAASSLG DQEGGGESQL SSVLRRSSFS EGQTLTVTSG AKKSHIRSHS DTSIASRGAP GNEEHRLLV S KMTLN</p>
Characteristics:	Human KIAA0226 full-length ORF ( AAH33615.1, 1 a.a. - 375 a.a.) recombinant protein with GST-tag at N-terminal.
Purification:	in vitro wheat germ expression system

## Target Details

Target:	Rubicon (KIAA0226)
Alternative Name:	KIAA0226 ( <a href="#">KIAA0226 Products</a> )
Background:	Full Gene Name: KIAA0226 Synonyms:
Gene ID:	9711
Pathways:	<a href="#">Autophagy</a>

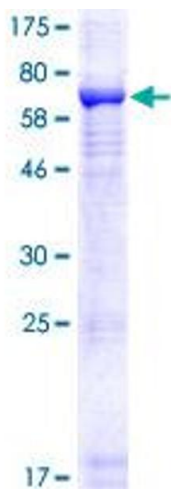
## Application Details

Application Notes:	Optimal working dilution should be determined by the investigator.
Comment:	Preparation method: in vitro, wheat germ expression system Product Quality tested by: 12.5% SDS-PAGE Stained with Coomassie Blue.
Restrictions:	For Research Use only

## Handling

Buffer:	50 mM Tris-HCl, 10 mM reduced Glutathione, pH =8.0 in the elution buffer.
Handling Advice:	Aliquot to avoid repeated freezing and thawing.
Storage:	-80 °C
Storage Comment:	Best use within three months from the date of receipt of this protein.

## Images



**Image 1.**