

Datasheet for ABIN1308560
GLTSCR1L Protein (AA 1-1079) (GST tag)



[Go to Product page](#)

1 Image

Overview

Quantity:	25 µg
Target:	GLTSCR1L
Protein Characteristics:	AA 1-1079
Origin:	Human
Source:	Wheat germ
Protein Type:	Recombinant
Purification tag / Conjugate:	This GLTSCR1L protein is labelled with GST tag.
Application:	ELISA, Western Blotting (WB), Affinity Purification (AP), Antibody Array (AA)

Product Details

Purpose:	KIAA0240 (Human) Recombinant Protein (P01)
Sequence:	MDDDDDSCLL DLIGDPQALN YFLHGPSNKS SNDDL TNAGY SAANSNSIFA NSSNADPKSS LKGVS NQLGE GPSDGLPLSS SLQFLEDELE SSPLPDLTED QPF DILQKSL QEANITEQTL AEEAYLDASI GSSQQFAQAQ LHPSSSASFT QASNVSNYSG QTLQPIGVTH VPVGASFASN TVGVQHGMFQ HVGISVPSQH LSNSSQISGS GQIQLIGSFG NHPSMMTINN LDGSQIILKG SGQQAPSNVS GLLVHRQTP NGNSLFGNSS SSPVAQPVTV PFNSTNFQTS LPVHNIIIQR GLAPNSNKVP INIQPKPIQM GQNTYNNVNN LGIQQHHVQQ GISFASASSP QGSVVGPHMS VNIVNQNTR KPVT SQAVSS TGG SIVIHSP MGQPHAPQSQ FLIPTSLSVS SNSVHHVQTI NGQLLQTQPS QLISGVASE HVMLNRNSSN MLRTNQPYTG PMLNNQNTAV HLVSGQTFAA SGSPVIANHA SPQLVGGQMP LQQASPTVLH LSPGQSSVSQ GRPGFATMPS VTSMSGPSRF PAVSSASTAH PSLGSAVQSG SSGSNFTGDQ LTQPNRTPVP VSVSHRLPVS SSKSTSTFSN TPGTGTQQQF FCQAQKKCLN QTSPISAPKT TDGLRQAQIP GLLSTTLPGQ DSGSKVISAS

Product Details

LGTAQPQEK VVGSSPGHPA VQVESHSGGQ KRPAAKQLTK GAFILQQLQR DQAHTVTPDK
SHFRSLSDAV QRLLSYHVCQ GSMPTEEDLR KVDNEFETVA TQLLKRTQAM LNKYRCLLLE
DAMRINPSAE MVMIDRMFNQ EERASLSRDK RLALVDPEGF QADFCCSFKL DKA AHETQFG
RSDQHGSKAS SSLQPPAKAQ GRDRAKTGVT EPMNHDQFHL VPNHIVSAE GNISKKTECL
GRALKFDKVG LVQYQSTSEE KASRREPLKA SQCSPGPEGH RKTSSRSDHG TESKLSSILA
DSHLEMTCNN SFQDKSLRNS PKNEVLHTDI MKGSGEPQPD LQLTKSLETT FKNILELKKA
GRQPQSDPTV SGSVELDFPN FSPMASQENC LEKFIPDHSE GVVETDSILE AAVNSILEC

Characteristics: Human KIAA0240 full-length ORF (NP_056164.1, 1 a.a. - 1079 a.a.) recombinant protein with GST-tag at N-terminal.

Purification: in vitro wheat germ expression system

Target Details

Target: GLTSCR1L

Alternative Name: KIAA0240 ([GLTSCR1L Products](#))

Background: Full Gene Name: KIAA0240
Synonyms: DKFZp686P0250

Gene ID: 23506

NCBI Accession: [NM_015349](#)

Application Details

Application Notes: Optimal working dilution should be determined by the investigator.

Comment: Preparation method: in vitro, wheat germ expression system
Product Quality tested by: 12.5% SDS-PAGE Stained with Coomassie Blue.

Restrictions: For Research Use only

Handling

Buffer: 50 mM Tris-HCl, 10 mM reduced Glutathione, pH =8.0 in the elution buffer.

Handling Advice: Aliquot to avoid repeated freezing and thawing.

Storage: -80 °C

Storage Comment: Best use within three months from the date of receipt of this protein.

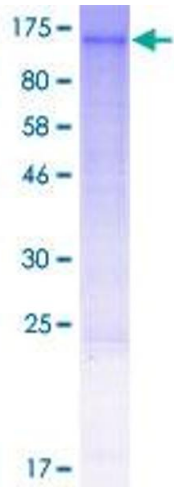


Image 1.