

Datasheet for ABIN1308563
SECISBP2L Protein (AA 1-1056) (GST tag)



[Go to Product page](#)

1 Image

Overview

Quantity:	25 µg
Target:	SECISBP2L
Protein Characteristics:	AA 1-1056
Origin:	Human
Source:	Wheat germ
Protein Type:	Recombinant
Purification tag / Conjugate:	This SECISBP2L protein is labelled with GST tag.
Application:	ELISA, Western Blotting (WB), Affinity Purification (AP), Antibody Array (AA)

Product Details

Purpose:	KIAA0256 (Human) Recombinant Protein (P01)
Sequence:	MDRAPTEQNV KLSAEVEPFI PQQKSPDTFM IPMALPNDNG SVSGVEPTPI PSYLITCYPF VQENQSNRQF PLYNNDIRWQ QPNPNPTGPY FAYPIISAQP PVSTEYTYQ LMPAPCAQVM GFYHPFPTY SNTFQAANTV NAITTECTER PSQLGQVFPL SSHRSRNSNR GSVVPKQQLL QQHIKSRPL VKNVATQKET NAAGPDSRSK IVLLVDASQQ TDFPSDIANK SLSETTATML WKSKGRRRRA SHPTAESSSE QGASEADIDS DSGYCSPKHS NNQPAAGALR NPDSGTMNHV ESSMCAGGVN WSNVTCQATQ KKPWMEKNQT FSRGGRQTEQ RNNSQDEDGF QELNENGNK DENIQQLSS KVLDDLPENS PINIVQPIPI ITTSVPKRAK SQKKKALAAA LATAQEYSEI SMEQKKLQEA LSKAAGKKNK TPVQLDLGDM LAALEKQQQA MKARQITNTR PLSYTVVTAA SFHTKDSTNR KPLTKSQPCL TSFNVDIAS SKAKKGKEKE IAKLKRPTAL KKVILKEREE KKGRLTVDHN LLGSEEPTEM HLD FIDDLQP EIVSQEDTGL SMPSDTSLSP ASQNSPYCMT PVSQGSPASS GIGSPMASST ITKIHKRFR EYCNQVLCKE IDECVTLLLQ ELVSFQERIY

Product Details

QKDPVRAKAR RRLVMGLREV TKHMKLNKIK CVIISPNCCK IQSKGGLDEA LYNVIAMARE
QEIPFVFALG RKALGRCVNK LVPVSVVGIF NYFGAESLFN KLVELTEEAR KAYKDMVAAM
EQEQAEELK NVKVPVPHMG HSRNPSAASA ISFCSVISEP ISEVNEKEYE TNWRNMVETS
DGLEASENEK EVSCKHSTSE KPSKLPFDTP PIGKQPSLVA TGSTTSATSA GKSTASDKEE
VKPDDLEWAS QQSTETGSLD GSCRDLLNSS ITSTTSTLVP GMLEEEEDDED EEEEEEDYTHE
PISVEVQLNS RIESWVSETQ RTMETLQLGK TLNGSEEDNV EQSGEEEAEA PEVLEPGMDS
EAWTADQQAS PGQKSSNCS SLNKEHSDSN YTTQTT

Characteristics: Human KIAA0256 full-length ORF (NP_055516.2, 1 a.a. - 1056 a.a.) recombinant protein with GST-tag at N-terminal.

Purification: in vitro wheat germ expression system

Target Details

Target: SECISBP2L

Alternative Name: KIAA0256 ([SECISBP2L Products](#))

Background: Full Gene Name: KIAA0256 gene product
Synonyms:

Gene ID: 9728

NCBI Accession: [NM_014701](#)

Application Details

Application Notes: Optimal working dilution should be determined by the investigator.

Comment: Preparation method: in vitro, wheat germ expression system
Product Quality tested by: 12.5% SDS-PAGE Stained with Coomassie Blue.

Restrictions: For Research Use only

Handling

Buffer: 50 mM Tris-HCl, 10 mM reduced Glutathione, pH =8.0 in the elution buffer.

Handling Advice: Aliquot to avoid repeated freezing and thawing.

Storage: -80 °C

Storage Comment: Best use within three months from the date of receipt of this protein.

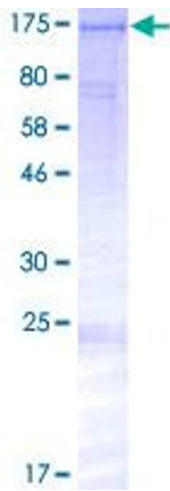


Image 1.