

Datasheet for ABIN1308567

KIAA0319L Protein (KIAA0319L) (AA 1-1049) (GST tag)



[Go to Product page](#)

1 Image

Overview

Quantity:	10 µg
Target:	KIAA0319L
Protein Characteristics:	AA 1-1049
Origin:	Human
Source:	Wheat germ
Protein Type:	Recombinant
Purification tag / Conjugate:	This KIAA0319L protein is labelled with GST tag.
Application:	ELISA, Western Blotting (WB), Affinity Purification (AP), Antibody Array (AA)

Product Details

Purpose:	KIAA0319L (Human) Recombinant Protein (P01)
Sequence:	MEKRLGVKPN PASWILSGYY WQTSAKWLRSLYLFYTCFCF SVLWLSTDAS ESRCQQGKTQ FGVGLRSGGE NHLWLLEGTP SLQSCLAACC QDSACHVFWW LEGMCIQADC SRPQSCRAFR THSSNSMLVF LKKFQTADDL GFLPEDDVPH LLGLGWNWAS WRQSPRAAL RPAVSSSDQQ SLIRKLQKRG SPSDVVTPIV TQHSKVNDSN ELGGLTSGS AEVHKAITIS SPLTTDLTAE LSGGPKNVSV QPEISEGLAT TPSTQQVKSS EKTQIAVPQP VAPSYSYATP TPQASFQSTS APYYPVikelV VSAGESVQIT LPKNEVQLNA YVLQEPPKGE TYTYDWQLIT HPRDYSGEME GKHSQILKLS KLTPGLYEFK VIVEGQNAHG EGYVNVTVKP EPRKNRPPIA IVSPQFQEIS LPTTSTVIDG SQSTDDDKIV QYHWHEELKGP LREEKISED TAILKLSKLV GNYTFSLTVV DSDGATNSTT ANLTVNKAVD YPPVANAGPN QVITLPQNSI TLFGNQSTDD HGITSYEWSL SPSSKGKVE MQGVRTPTLQ LSAMQEGDYT YQLTVTDTIG QQATAQVTVI VQPENKPPQ ADAGPDKELT LPVDSTTLDG SKSSDDQKII SYLWEKTQGP DGVQLENANS SVATVTGLQV

Product Details

GTYVFTLTVK DERNLQSQSS VNVIVKEEIN KPPIAKITGN VVITLPTSTA ELDGSKSSDD
KGIVSYLWTR DEGSPAAGEV LNHSDDHPIL FLSNLVEGTY TFHLKVTDK GESDTRTTV
EVKPDPRKNN LVEILDINV SQLTERLKGM FIRQIGVLLG VLDSDIIVQK IQPYTEQSTK
MVFFVQNEPP HQIFKGHEVA AMLKSELRKQ KADFLIFRAL EVNTVTCQLN CSDHGHCDSE
TKRCICDPFW MENFIKVQLR DGDSNCEWSV LYVVIATFVI VVALGILSWT VICCCRQKG
KPKRKSKYKI LDATDQESLE LKPTSRAGIK QKGLLLSSSL MHSESELDSD DAIFTWPDRE
KGKLLHGQNG SVPNGQTPLK ARSPREEIL

Characteristics: Human KIAA0319L full-length ORF (AAH14530.1, 1 a.a. - 1049 a.a.) recombinant protein with GST-tag at N-terminal.

Purification: in vitro wheat germ expression system

Target Details

Target: KIAA0319L

Alternative Name: KIAA0319L ([KIAA0319L Products](#))

Background: Full Gene Name: KIAA0319-like
Synonyms: KIAA1837,PKD1-like,PP791,RP4-765A10.3

Gene ID: 79932

Application Details

Application Notes: Optimal working dilution should be determined by the investigator.

Comment: Preparation method: in vitro, wheat germ expression system
Product Quality tested by: 12.5% SDS-PAGE Stained with Coomassie Blue.

Restrictions: For Research Use only

Handling

Buffer: 50 mM Tris-HCl, 10 mM reduced Glutathione, pH =8.0 in the elution buffer.

Handling Advice: Aliquot to avoid repeated freezing and thawing.

Storage: -80 °C

Storage Comment: Best use within three months from the date of receipt of this protein.

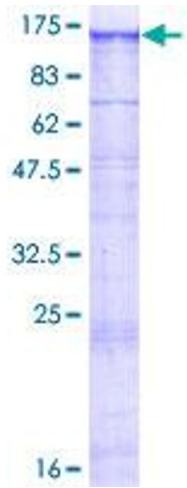


Image 1.