



[Go to Product page](#)

Datasheet for ABIN1308583

KIAA0562 Protein (KIAA0562) (AA 1-554) (GST tag)

1 Image

Overview

Quantity:	25 µg
Target:	KIAA0562
Protein Characteristics:	AA 1-554
Origin:	Human
Source:	Wheat germ
Protein Type:	Recombinant
Purification tag / Conjugate:	This KIAA0562 protein is labelled with GST tag.
Application:	ELISA, Western Blotting (WB), Affinity Purification (AP), Antibody Array (AA)

Product Details

Purpose:	KIAA0562 (Human) Recombinant Protein (P01)
Sequence:	MPHKIGFVVV SSSGHEDGFS ARELMIHAPT VSGWRSRFFC QFPQEIVLQM VERCRIRKLQ LLAHQYMISS KIEFYISESL PEYFAPYQAE RFRRLGYVSL CDNEKTGCKA RELKSVYVDA VGQFLKLIFH QNHVNKYNII NQVALVAINI IGDPADFSDE SNTASREKLI DHYLGHNSED PALEGTYARK SDYISPLDDL AFDMYQDPEV AQIIRKLDER KREAVQKERY DYAKKLKQAI ADLQKVGREL GRYEVEKRCA VEKEDFDLAK EKKQQMEQYR AEVYEQLELH SLLDAELMRR PFDLPLQPLA RSGSPCHQKP MPSPQLLEER GTENQFAEPF LQEKPSYSYL TISPOHSAVD PLLPAIDPHP KINAESLPYD ERSPLAIRKH YGEAVVEPEM SNADISDARR GGMLGEPEPL TEKALREASS AIDVLGETLV AEAYCKTWSY REDALLALS KLMEMPVGTP KEDLKNTLRA SVFLVRRRAIK DIVTSVFQAS LKLLKMIITQ YIPKHKLSKL ETAHCVERTI PVLLTRTGDS SARLRVTAAN FIQV
Characteristics:	Human KIAA0562 full-length ORF (AAH47450.1, 1 a.a. - 554 a.a.) recombinant protein with

Product Details

GST-tag at N-terminal.

Purification: in vitro wheat germ expression system

Target Details

Target: KIAA0562

Alternative Name: KIAA0562 ([KIAA0562 Products](#))

Background: Full Gene Name: KIAA0562
Synonyms: GlyBP

Gene ID: 9731

Application Details

Application Notes: Optimal working dilution should be determined by the investigator.

Comment: Preparation method: in vitro, wheat germ expression system
Product Quality tested by: 12.5% SDS-PAGE Stained with Coomassie Blue.

Restrictions: For Research Use only

Handling

Buffer: 50 mM Tris-HCl, 10 mM reduced Glutathione, pH =8.0 in the elution buffer.

Handling Advice: Aliquot to avoid repeated freezing and thawing.

Storage: -80 °C

Storage Comment: Best use within three months from the date of receipt of this protein.

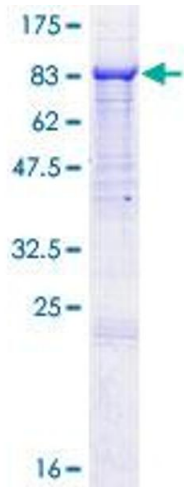


Image 1.