

Datasheet for ABIN1308594

Fetal Sulfoslycoprotein Antigen (FSA) (AA 1-191) protein (GST tag)



[Go to Product page](#)

1 Image

Overview

Quantity:	10 µg
Target:	Fetal Sulfoslycoprotein Antigen (FSA)
Protein Characteristics:	AA 1-191
Origin:	Human
Source:	Wheat germ
Protein Type:	Recombinant
Purification tag / Conjugate:	GST tag
Application:	Affinity Purification (AP), Antibody Array (AA), ELISA, Western Blotting (WB)

Product Details

Purpose:	KIAA1109 (Human) Recombinant Protein (P01)
Sequence:	MQLDFKSIHV QEPQEPSLQD ASLKPKVECS VVTEFTDHIC VTMDAELIMF LHDLV SAYLK EKEKAIFPPR ILSTRPGQKS PIIHDDNSS DKDREDSITY TTV DWRDFMC NTWHLEPTLR LISWTGRKID PVGV DYILQK LGFHHARTTI PKWLQRGVMD PLDKVLSVLI KKLGTALQDE KEKKGDKKEE H
Characteristics:	Human KIAA1109 full-length ORF (AAH45783.1, 1 a.a. - 191 a.a.) recombinant protein with GST-tag at N-terminal.
Purification:	in vitro wheat germ expression system

Target Details

Target:	Fetal Sulfoslycoprotein Antigen (FSA)
---------	---------------------------------------

Target Details

Alternative Name:	KIAA1109 (FSA Products)
Background:	Full Gene Name: KIAA1109 Synonyms: DKFZp781P0474,FSA,MGC110967
Gene ID:	84162

Application Details

Application Notes:	Optimal working dilution should be determined by the investigator.
Comment:	Preparation method: in vitro, wheat germ expression system Product Quality tested by: 12.5% SDS-PAGE Stained with Coomassie Blue.
Restrictions:	For Research Use only

Handling

Buffer:	50 mM Tris-HCl, 10 mM reduced Glutathione, pH =8.0 in the elution buffer.
Handling Advice:	Aliquot to avoid repeated freezing and thawing.
Storage:	-80 °C
Storage Comment:	Best use within three months from the date of receipt of this protein.

Images

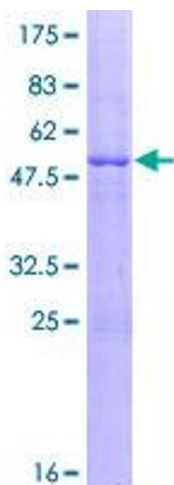


Image 1.