



Datasheet for ABIN1308607
ETL4 Protein (AA 1-877) (GST tag)



[Go to Product page](#)

1 Image

Overview

Quantity:	10 µg
Target:	ETL4
Protein Characteristics:	AA 1-877
Origin:	Human
Source:	Wheat germ
Protein Type:	Recombinant
Purification tag / Conjugate:	This ETL4 protein is labelled with GST tag.
Application:	Affinity Purification (AP), Antibody Array (AA), ELISA, Western Blotting (WB)

Product Details

Purpose:	KIAA1217 (Human) Recombinant Protein (P01)
Sequence:	MVWPGNATIP RDRISLPVS RPISPSPSAI LERRDVKPDE DMSGKNIAMY RNEGFYADPY LYHEGRMSIA SSHGGHPLDV PDHIIAYHRT AIRSASAYCN PSMQAEMHME QSLYRQKSRK YPDSLPTLG SKTPPASPHR VSDLRMIDMH AHYNAHGPPH TMQPDRASPS RQAFKKEPGT LVYIEKPRSA AGLSSLVDLG PPLMEKQVFA YSTATIPKDR ETSEKMMKTT ANRNHTDSAG TPHVSGGKML SALESTVPPS QPPVGTSAI HMSLLEMRRS VAELRLQLQQ MRQLQLQNQE LLRAMMKKAE LEISGKVMET MKRLEDPVQR QRVLVEQERQ KYLHEEEKIV KKLCELEDFV EDLKKDSTAA SRLVTLKDVE DGAFLLRQVG EAVATLKGEF PTLQNKMRI LRIEVEAVRF LKEEPHKLDS LLKRVRSM TD VLTMLRRHVT DGLLKGTDAA QAAQYMAMEK ATAAEVLKSQ EEAHTSGQP FHSTGAPGDA KSEVVPLSGM MVRHAQSSPV VIQPSQHSVA LLNPAQNLPH VASSPAVPQE ATSTLQMSQA PQSPQIPMNG SAMQSLFIEE IHSVSAKNRA VSIEKAEEKW EEKRQNL DHY NGKEFEKLE EAQANIMKSI PNLEMPATG PLPRGDAPVD KVELSEDS PN

Product Details

SEQDLEKLGK KSPPPPPPPP RRSYLPGSGL TTTRSGDVVY TGRKENITAK ASSEDAGPSP
QTRATKYPAE EPASAWTPSP PPVTTSSSKD EEEEEEGDK IMAELQAFQK CSFMDVNSNS
HAEPSRADSH VKDTRSGATV PPKEKKNLEF FHEDVRKSDV EYENGPQMEF QKGSSGAPQT
SRMPVPMSAK NRPGLDKPG KQSKLQDPRQ YRQVWLP

Characteristics: Human KIAA1217 full-length ORF (AAH18764.1, 1 a.a. - 877 a.a.) recombinant protein with GST-tag at N-terminal.

Purification: in vitro wheat germ expression system

Target Details

Target: ETL4

Alternative Name: KIAA1217 ([ETL4 Products](#))

Background: Full Gene Name: KIAA1217
Synonyms: DKFZp761L0424,MGC31990,SKT

Gene ID: 56243

Application Details

Application Notes: Optimal working dilution should be determined by the investigator.

Comment: Preparation method: in vitro, wheat germ expression system
Product Quality tested by: 12.5% SDS-PAGE Stained with Coomassie Blue.

Restrictions: For Research Use only

Handling

Buffer: 50 mM Tris-HCl, 10 mM reduced Glutathione, pH =8.0 in the elution buffer.

Handling Advice: Aliquot to avoid repeated freezing and thawing.

Storage: -80 °C

Storage Comment: Best use within three months from the date of receipt of this protein.

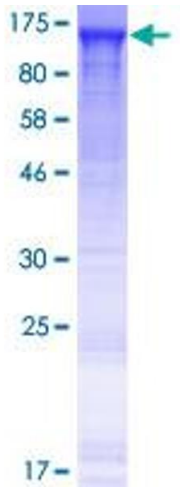


Image 1.