



[Go to Product page](#)

Datasheet for ABIN1308623

FAM214B Protein (AA 1-538) (GST tag)

1 Image

Overview

Quantity:	25 µg
Target:	FAM214B
Protein Characteristics:	AA 1-538
Origin:	Human
Source:	Wheat germ
Protein Type:	Recombinant
Purification tag / Conjugate:	This FAM214B protein is labelled with GST tag.
Application:	ELISA, Western Blotting (WB), Affinity Purification (AP), Antibody Array (AA)

Product Details

Purpose:	KIAA1539 (Human) Recombinant Protein (P01)
Sequence:	MRHVQAEPSP SSEPEAGPSQ PPVRQGalQG GLLMGYSPAG GATSPGVYQV SIFSPAGTS EPHRALKRQA PSTEGPRELK RGPGLGAREG LPPEEPSTVG LLGPEGPGLG LGVASQHFSH RGLCVVEQRS SVTSSWTSGA WSPPCPPSNA SCNTLHTRDW ASPDPGGQGS LGESPGPAPP GQLHTLDTDL HSLAQIGGKS PVAGVGNNGS LWPRESGTA NGHSPHPTTP GPGPPGPCPT KRRLLPAGEA PDVSSEEEGP APRRRRGLSG HPTAANSSDA KATPFWSHLL PGPKEPVLDP TDCGPMGRRL KGARRLKLSP LRSLRKG PGL LSPPSASPVP TPAVSRTLLG NFEESLLRGR FAPSGHIEGF TAEIGASGSY CPQHVTLPVT VTFFDVSEQN APAPFLGIVD LNPLGRKGYS VPKVGTVQVT LFNPNQTVVK MFLVTFDFSD MPAAHMTFLR HRLFLVPVGE EGNANPTHRL LCYLLHLRFR SSRSGRLSLH GDIRLLFSRR SLELDTGLPY ELQAVTEAPH NPRYSPLP
Characteristics:	Human KIAA1539 full-length ORF (NP_079458.2, 1 a.a. - 538 a.a.) recombinant protein with GST-tag at N-terminal.

Product Details

Purification: in vitro wheat germ expression system

Target Details

Target: FAM214B

Alternative Name: KIAA1539 ([FAM214B Products](#))

Background: Full Gene Name: KIAA1539
Synonyms: FLJ11560,P1.11659_5,RP11-182N22.6,bA182N22.6

Gene ID: 80256

NCBI Accession: [NM_025182](#)

Application Details

Application Notes: Optimal working dilution should be determined by the investigator.

Comment: Preparation method: in vitro, wheat germ expression system
Product Quality tested by: 12.5% SDS-PAGE Stained with Coomassie Blue.

Restrictions: For Research Use only

Handling

Buffer: 50 mM Tris-HCl, 10 mM reduced Glutathione, pH =8.0 in the elution buffer.

Handling Advice: Aliquot to avoid repeated freezing and thawing.

Storage: -80 °C

Storage Comment: Best use within three months from the date of receipt of this protein.

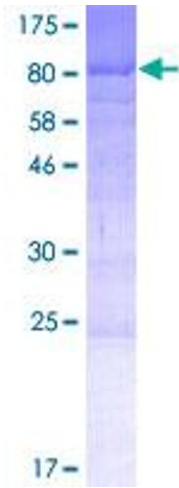


Image 1.