



[Go to Product page](#)

Datasheet for ABIN1308632

KIAA1683 Protein (KIAA1683) (AA 1-444) (GST tag)

1 Image

Overview

Quantity:	25 µg
Target:	KIAA1683
Protein Characteristics:	AA 1-444
Origin:	Human
Source:	Wheat germ
Protein Type:	Recombinant
Purification tag / Conjugate:	This KIAA1683 protein is labelled with GST tag.
Application:	ELISA, Western Blotting (WB), Affinity Purification (AP), Antibody Array (AA)

Product Details

Purpose:	KIAA1683 (Human) Recombinant Protein (P01)
Sequence:	MAPSSRWDAM GPKNSYRSVH GRIVPELLES SVARVRPLQY VQRQPSQASA RSGANPTHRP SAEVRPVIRT GEMTHSSVIP PLAPGVRRVS LGYESSPSGS LPPLFNQESP WRRQDSYSPQ NPAVSHKASL NSTILQGPAD AGVVGGQSWN RAWEPARGAA SWDTWRNKAV VPPRRSGEPM VSMQAAEEIR ILAVITIQAG VRGYLARRRI RLWHRGAMVI QATWRGYRVR RNLAHLCRAT TTIQSAWRGY STRRDQARHW QMLHPVTWVE LGSRAGVMSD RSWFQDGRAR TVSDHRCFQS CQAHACSVCH SLSSRIGSPP SVVMLVGSSP RTCHTCGRTQ PTRVVQGMGQ GTEGPGAVSW ASAYQLAALS PRQPHRQDKA ATAIQSAWRG FKIRQQMRQQ QMAAKIVQAT WRGHHTRSC KNTEALLGPA DPSASSRHMH WPGI
Characteristics:	Human KIAA1683 full-length ORF (AAH34327.1, 1 a.a. - 444 a.a.) recombinant protein with GST-tag at N-terminal.

Product Details

Purification: in vitro wheat germ expression system

Target Details

Target: KIAA1683

Alternative Name: KIAA1683 ([KIAA1683 Products](#))

Background: Full Gene Name: KIAA1683
Synonyms: MGC131731

Gene ID: 80726

Application Details

Application Notes: Optimal working dilution should be determined by the investigator.

Comment: Preparation method: in vitro, wheat germ expression system
Product Quality tested by: 12.5% SDS-PAGE Stained with Coomassie Blue.

Restrictions: For Research Use only

Handling

Buffer: 50 mM Tris-HCl, 10 mM reduced Glutathione, pH =8.0 in the elution buffer.

Handling Advice: Aliquot to avoid repeated freezing and thawing.

Storage: -80 °C

Storage Comment: Best use within three months from the date of receipt of this protein.

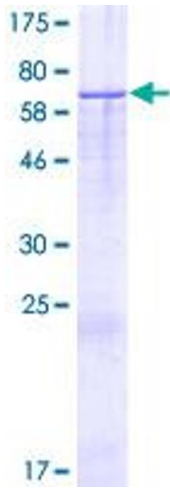


Image 1.