



[Go to Product page](#)

Datasheet for ABIN1308634

CIPC/KIAA1737 Protein (AA 1-399) (GST tag)

1 Image

Overview

Quantity:	10 µg
Target:	CIPC/KIAA1737 (CIPC)
Protein Characteristics:	AA 1-399
Origin:	Human
Source:	Wheat germ
Protein Type:	Recombinant
Purification tag / Conjugate:	This CIPC/KIAA1737 protein is labelled with GST tag.
Application:	ELISA, Western Blotting (WB), Affinity Purification (AP), Antibody Array (AA)

Product Details

Purpose:	KIAA1737 (Human) Recombinant Protein (P01)
Sequence:	MERKNPSRES PRRLSAKVGK GTEMKKVARQ FGMAAAESDK DSGFSDGSSE CLSSAEQMES EDMLSALGWS REDRPRQNSK TAKNAFPTLS PMVVMKNVLV KQGSSSSQLQ SWTVQPSFEV ISAPQQLLFL HPPVPSPVSP CHTGEKKSIDS RNYLPILNSY TKIAPHPGKR GLSLGPPEEK TSGVQKKICT ERLGPSLSSS EPTKAGAVPS SPSTPAPPSA KLAEDSALQG VPSLVAGGSP QTLQPVSSSH VAKAPSLTFA SPASPVCA SD STLHGLESNS PLSPLSANYS SPLWAAEHL RSPDIFSEQR QSKHRRFQNT LVVLHKSGLL EITLTKKELI RQNQATQVEL DQLKEQTQLF IEATKSRAPQ AWAKLQASLT PGSSNTGSDL EAFSDHPAI
Characteristics:	Human KIAA1737 full-length ORF (AAH37300.1, 1 a.a. - 399 a.a.) recombinant protein with GST-tag at N-terminal.
Purification:	in vitro wheat germ expression system

Target Details

Target:	CIPC/KIAA1737 (CIPC)
Alternative Name:	KIAA1737 (CIPC Products)
Background:	Full Gene Name: KIAA1737 Synonyms:
Gene ID:	85457

Application Details

Application Notes:	Optimal working dilution should be determined by the investigator.
Comment:	Preparation method: in vitro, wheat germ expression system Product Quality tested by: 12.5% SDS-PAGE Stained with Coomassie Blue.
Restrictions:	For Research Use only

Handling

Buffer:	50 mM Tris-HCl, 10 mM reduced Glutathione, pH =8.0 in the elution buffer.
Handling Advice:	Aliquot to avoid repeated freezing and thawing.
Storage:	-80 °C
Storage Comment:	Best use within three months from the date of receipt of this protein.

Images

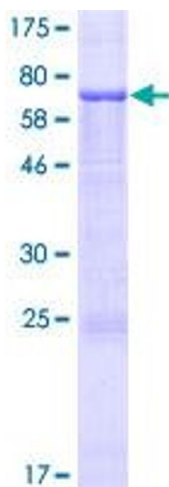


Image 1.