



[Go to Product page](#)

Datasheet for ABIN1308639

## KIAA1919 Protein (KIAA1919) (AA 1-518) (GST tag)

### 1 Image

#### Overview

Quantity:	25 µg
Target:	KIAA1919
Protein Characteristics:	AA 1-518
Origin:	Human
Source:	Wheat germ
Protein Type:	Recombinant
Purification tag / Conjugate:	This KIAA1919 protein is labelled with GST tag.
Application:	ELISA, Western Blotting (WB), Affinity Purification (AP), Antibody Array (AA)

#### Product Details

Purpose:	KIAA1919 (Human) Recombinant Protein (P01)
Sequence:	MLCASFLGLG LSVAVGPTF QDLATNVNRRN ISSLSFIFVG RALGYLSGSV IGGFLVDVMN YFLLLGISMS ATTVGLYLVP FCKTAILLTV MMPIFGVSIG ILDTGGNVLI LAIWGDKGAP HMQUALHFSFA LGAFLAPLLA KLALGPTASA ENHTESDFHP ALNQSSDADS EALFGVPNDK NLLWAYAVIG TYMFLVSVIF FCLFLKNSSK QEKARASAET FRRAKYHNAL LCLLFLFFFF YVGAEVTYGS YVFSFATTHA GMKESEAAGL NSIFWGTFAA CRGLAIFPAT CLQPGTMIVL SNIGSLTSSL FLVLFDKNPI CLWIATSVYG ASMATTFPSG VSWIEQYTTI HGKSAAFFVI GASLGEMAIP AVIGILQGKY PDLPVVLYTS LGASIATGIL FPLYLKLATS PLDRQRKEDR KSEDQKALLS SSSLNEYEEE NEEEDA EKWN EMDFEMIETN DTMRHSIIET SRSSLTEPTA EVYNQYPSNA LVFESSPFNT GSAHVKHLPE TRTKGTNV
Characteristics:	Human KIAA1919 full-length ORF ( NP_699200.1, 1 a.a. - 518 a.a.) recombinant protein with GST-tag at N-terminal.

## Product Details

---

Purification: in vitro wheat germ expression system

## Target Details

---

Target: KIAA1919

Alternative Name: KIAA1919 ([KIAA1919 Products](#))

Background: Full Gene Name: KIAA1919  
Synonyms: MGC33953,NaGLT1

Gene ID: 91749

NCBI Accession: [NM\\_153369](#)

## Application Details

---

Application Notes: Optimal working dilution should be determined by the investigator.

Comment: Preparation method: in vitro, wheat germ expression system  
Product Quality tested by: 12.5% SDS-PAGE Stained with Coomassie Blue.

Restrictions: For Research Use only

## Handling

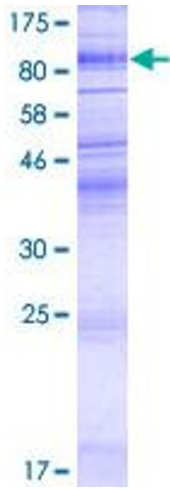
---

Buffer: 50 mM Tris-HCl, 10 mM reduced Glutathione, pH =8.0 in the elution buffer.

Handling Advice: Aliquot to avoid repeated freezing and thawing.

Storage: -80 °C

Storage Comment: Best use within three months from the date of receipt of this protein.



**Image 1.**