

Datasheet for ABIN1308647  
**KIF13B Protein (AA 1-100) (GST tag)**



[Go to Product page](#)

1 Image

Overview

|                               |   |
|-------------------------------|---|
| Quantity:                     | 10 µg   |
| Target:                       | KIF13B  |
| Protein Characteristics:      | AA 1-100  |
| Origin:                       | Human   |
| Source:                       | Wheat germ  |
| Protein Type:                 | Recombinant   |
| Purification tag / Conjugate: | This KIF13B protein is labelled with GST tag.                                 |
| Application:                  | Affinity Purification (AP), Antibody Array (AA), ELISA, Western Blotting (WB) |

Product Details

|                  |  |
|------------------|--|
| Purpose:         | KIF13B (Human) Recombinant Protein (Q01)   |
| Sequence:        | MGDSKVKVAV RIRPMNRRET DLHTKCVVDV DANKVILNPV NTNLSKGDAR GQPKVFAYDH<br>CFWSMDESVK EKYAGQDIVF KCLGENILQN AFDGYNACIF |
| Characteristics: | Human KIF13B partial ORF ( NP_056069, 1 a.a. - 100 a.a.) recombinant protein with GST-tag at N-terminal.         |
| Purification:    | in vitro wheat germ expression system  |

Target Details

|                   |  |
|-------------------|--|
| Target:           | KIF13B                                     |
| Alternative Name: | KIF13B ( <a href="#">KIF13B Products</a> ) |

## Target Details

|                 |   |
|-----------------|---|
| Background:     | Full Gene Name: kinesin family member 13B<br>Synonyms: GAKIN,KIAA0639 |
| Gene ID:        | 23303   |
| NCBI Accession: | <a href="#">NM_015254</a>   |

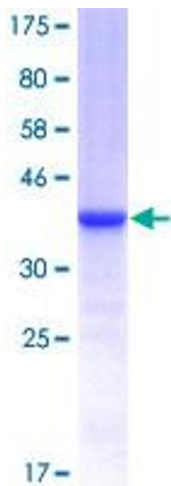
## Application Details

|                    |  |
|--------------------|--|
| Application Notes: | Optimal working dilution should be determined by the investigator.   |
| Comment:           | Preparation method: in vitro, wheat germ expression system<br>Product Quality tested by: 12.5% SDS-PAGE Stained with Coomassie Blue. |
| Restrictions:      | For Research Use only  |

## Handling

|                  |   |
|------------------|---|
| Buffer:          | 50 mM Tris-HCl, 10 mM reduced Glutathione, pH =8.0 in the elution buffer. |
| Handling Advice: | Aliquot to avoid repeated freezing and thawing.                           |
| Storage:         | -80 °C  |
| Storage Comment: | Best use within three months from the date of receipt of this protein.    |

## Images



**Image 1.**