

Datasheet for ABIN1308661  
**KIF20B Protein (AA 1671-1780) (GST tag)**



[Go to Product page](#)

1 Image

Overview

Quantity:	10 µg
Target:	KIF20B
Protein Characteristics:	AA 1671-1780
Origin:	Human
Source:	Wheat germ
Protein Type:	Recombinant
Purification tag / Conjugate:	This KIF20B protein is labelled with GST tag.
Application:	Affinity Purification (AP), Antibody Array (AA), ELISA, Western Blotting (WB)

Product Details

Purpose:	MPHOSPH1 (Human) Recombinant Protein (Q01)
Sequence:	RSQASIIGVN LATKKKEGTL QKFGDFLQHS PSILQSKAKK IIETMSSSKL SNVEASKENV SQPKRAKRKL YTSEISSPID ISGQVILMDQ KMKESDHQII KRRLRTKTAK
Characteristics:	Human MPHOSPH1 partial ORF ( NP_057279, 1671 a.a. - 1780 a.a.) recombinant protein with GST-tag at N-terminal.
Purification:	in vitro wheat germ expression system

Target Details

Target:	KIF20B
Alternative Name:	KIF20B ( <a href="#">KIF20B Products</a> )

## Target Details

---

Background:	Full Gene Name: kinesin family member 20B Synonyms: DKFZp434B0435,DKFZp434P0810,KRMP1,MPHOSPH1,MPP-1,MPP1
Gene ID:	9585
NCBI Accession:	<a href="#">NM_016195</a>
Pathways:	<a href="#">M Phase</a>

## Application Details

---

Application Notes:	Optimal working dilution should be determined by the investigator.
Comment:	Preparation method: in vitro, wheat germ expression system Product Quality tested by: 12.5% SDS-PAGE Stained with Coomassie Blue.
Restrictions:	For Research Use only

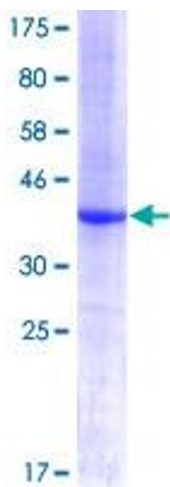
## Handling

---

Buffer:	50 mM Tris-HCl, 10 mM reduced Glutathione, pH =8.0 in the elution buffer.
Handling Advice:	Aliquot to avoid repeated freezing and thawing.
Storage:	-80 °C
Storage Comment:	Best use within three months from the date of receipt of this protein.

## Images

---



**Image 1.**