

Datasheet for ABIN1308665
KIF26A Protein (AA 1-203) (GST tag)



[Go to Product page](#)

1 Image

Overview

Quantity:	10 µg
Target:	KIF26A
Protein Characteristics:	AA 1-203
Origin:	Human
Source:	Wheat germ
Protein Type:	Recombinant
Purification tag / Conjugate:	This KIF26A protein is labelled with GST tag.
Application:	Affinity Purification (AP), Antibody Array (AA), ELISA, Western Blotting (WB)

Product Details

Purpose:	KIF26A (Human) Recombinant Protein (P01)
Sequence:	MSESGAASPG ARTRSLKSPK KRATGLQRRR LIPAPLPD TT ALGRKPSLPG QWVDLPPPLA GSLKEPFEIK VYEIDDVERL QRP RPTPREA PTQGLACVST RLRLAERRQQ RLREVQAKHK HLCEELAETQ GRLMLEPGRW LEQFEVDPEL EPESA EYLAA LERATAALEQ CVNLCKAHVM MVTCFDISVA ASAAIPGPQE VDV
Characteristics:	Human KIF26A full-length ORF (AAH09415, 1 a.a. - 203 a.a.) recombinant protein with GST-tag at N-terminal.
Purification:	in vitro wheat germ expression system

Target Details

Target:	KIF26A
---------	--------

Target Details

Alternative Name:	KIF26A (KIF26A Products)
Background:	Full Gene Name: kinesin family member 26A Synonyms: DKFZp434N178,FLJ22753,KIAA1236
Gene ID:	26153

Application Details

Application Notes:	Optimal working dilution should be determined by the investigator.
Comment:	Preparation method: in vitro, wheat germ expression system Product Quality tested by: 12.5% SDS-PAGE Stained with Coomassie Blue.
Restrictions:	For Research Use only

Handling

Buffer:	50 mM Tris-HCl, 10 mM reduced Glutathione, pH =8.0 in the elution buffer.
Handling Advice:	Aliquot to avoid repeated freezing and thawing.
Storage:	-80 °C
Storage Comment:	Best use within three months from the date of receipt of this protein.

Images

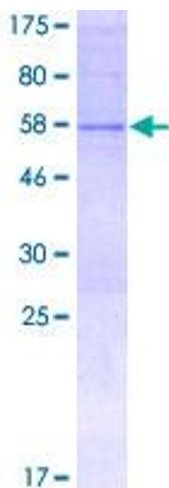


Image 1.