



[Go to Product page](#)

Datasheet for ABIN1308680

KIF6 Protein (AA 1-293) (GST tag)

1 Image

Overview

Quantity:	10 µg
Target:	KIF6
Protein Characteristics:	AA 1-293
Origin:	Human
Source:	Wheat germ
Protein Type:	Recombinant
Purification tag / Conjugate:	This KIF6 protein is labelled with GST tag.
Application:	ELISA, Western Blotting (WB), Affinity Purification (AP), Antibody Array (AA)

Product Details

Purpose:	KIF6 (Human) Recombinant Protein (P01)
Sequence:	MREEMSLGCQ EAFEIFKRDH ADSVTIDDNK QILKQRFSEA KALGESINEA RSKIGHLKEE ITQRHIQQA LGISENMAVP LMPDQEEKL RSQLEEEKRR YKTMFTRLKA LKVEIEHLQL LMDKAKVKLQ KEFEVWAAE ATNLQVNSPA VNSLDHTKPF LQTSDSQHER SQLLSNKSSG GWEVQDQGTG RFDVCDVNR KILPSPCSP HSQQSSTST PLEDSIPKRP VSSIPLTGDS QTDSIIAFI KARQSILQKQ YLQLLCSLFP KSAVSSAQAS TNRKGLSDVL VTR
Characteristics:	Human KIF6 full-length ORF (AAH98418.1, 1 a.a. - 293 a.a.) recombinant protein with GST-tag at N-terminal.
Purification:	in vitro wheat germ expression system

Target Details

Target:	KIF6
Alternative Name:	KIF6 (KIF6 Products)
Background:	Full Gene Name: kinesin family member 6 Synonyms: C6orf102,DKFZp451I2418,MGC33317,dJ1043E3.1,dJ137F1.4,dJ188D3.1
Gene ID:	221458

Application Details

Application Notes:	Optimal working dilution should be determined by the investigator.
Comment:	Preparation method: in vitro, wheat germ expression system Product Quality tested by: 12.5% SDS-PAGE Stained with Coomassie Blue.
Restrictions:	For Research Use only

Handling

Buffer:	50 mM Tris-HCl, 10 mM reduced Glutathione, pH =8.0 in the elution buffer.
Handling Advice:	Aliquot to avoid repeated freezing and thawing.
Storage:	-80 °C
Storage Comment:	Best use within three months from the date of receipt of this protein.

Images

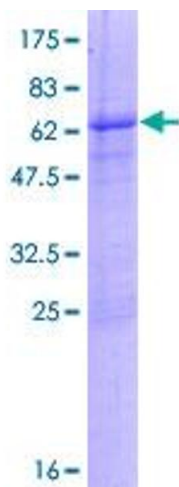


Image 1.