



[Go to Product page](#)

Datasheet for ABIN1308682

KIF9 Protein (AA 691-789) (GST tag)

1 Image

Overview

| | |
|-------------------------------|---|
| Quantity: | 10 µg |
| Target: | KIF9 |
| Protein Characteristics: | AA 691-789 |
| Origin: | Human |
| Source: | Wheat germ |
| Protein Type: | Recombinant |
| Purification tag / Conjugate: | This KIF9 protein is labelled with GST tag. |
| Application: | ELISA, Western Blotting (WB), Affinity Purification (AP), Antibody Array (AA) |

Product Details

| | |
|------------------|---|
| Purpose: | KIF9 (Human) Recombinant Protein (Q01) |
| Sequence: | VDQCRHRLLM EFDIWYNESF VIPEDMQMAL KPGGSIRPGM VPVNRIVSLG EDDQDKFSQL QQRVLPEGPD SISFYNAKVK IEQKHNYLKT MMGLQQAHR |
| Characteristics: | Human KIF9 partial ORF (NP_878905.1, 691 a.a. - 789 a.a.) recombinant protein with GST-tag at N-terminal. |
| Purification: | in vitro wheat germ expression system |

Target Details

| | |
|-------------------|--|
| Target: | KIF9 |
| Alternative Name: | KIF9 (KIF9 Products) |

Target Details

Background: Full Gene Name: kinesin family member 9
Synonyms: MGC104186

Gene ID: 64147

NCBI Accession: [NM_182902](#)

Application Details

Application Notes: Optimal working dilution should be determined by the investigator.

Comment: Preparation method: in vitro, wheat germ expression system
Product Quality tested by: 12.5% SDS-PAGE Stained with Coomassie Blue.

Restrictions: For Research Use only

Handling

Buffer: 50 mM Tris-HCl, 10 mM reduced Glutathione, pH =8.0 in the elution buffer.

Handling Advice: Aliquot to avoid repeated freezing and thawing.

Storage: -80 °C

Storage Comment: Best use within three months from the date of receipt of this protein.

Images

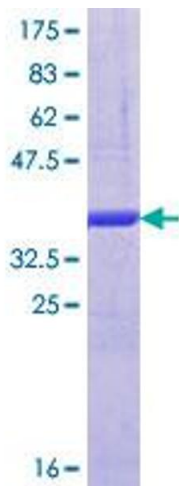


Image 1.