



[Go to Product page](#)

Datasheet for ABIN1308695

KIR2DL4/CD158d Protein (AA 32-126) (GST tag)

1 Image

Overview

Quantity:	10 µg
Target:	KIR2DL4/CD158d (KIR2DL4)
Protein Characteristics:	AA 32-126
Origin:	Human
Source:	Wheat germ
Protein Type:	Recombinant
Purification tag / Conjugate:	This KIR2DL4/CD158d protein is labelled with GST tag.
Application:	ELISA, Western Blotting (WB), Affinity Purification (AP), Antibody Array (AA)

Product Details

Purpose:	KIR2DL4 (Human) Recombinant Protein (Q01)
Sequence:	FCSAWPSAVV PQGGHVTLRC HYRRGFNIFT LYKKGVPVP ELYNRIFWNS FLISPVTPAH AGTYRCRGFH PHSPEWSAP SNPLVIMVTG LYEKP
Characteristics:	Human KIR2DL4 partial ORF (NP_002246, 32 a.a. - 126 a.a.) recombinant protein with GST-tag at N-terminal.
Purification:	in vitro wheat germ expression system

Target Details

Target:	KIR2DL4/CD158d (KIR2DL4)
Alternative Name:	KIR2DL4 (KIR2DL4 Products)

Target Details

Background:	Full Gene Name: killer cell immunoglobulin-like receptor, two domains, long cytoplasmic tail, 4 Synonyms: CD158D,G9P,KIR103,KIR103AS
Gene ID:	3805
NCBI Accession:	NM_002255

Application Details

Application Notes:	Optimal working dilution should be determined by the investigator.
Comment:	Preparation method: in vitro, wheat germ expression system Product Quality tested by: 12.5% SDS-PAGE Stained with Coomassie Blue.
Restrictions:	For Research Use only

Handling

Buffer:	50 mM Tris-HCl, 10 mM reduced Glutathione, pH =8.0 in the elution buffer.
Handling Advice:	Aliquot to avoid repeated freezing and thawing.
Storage:	-80 °C
Storage Comment:	Best use within three months from the date of receipt of this protein.

Images

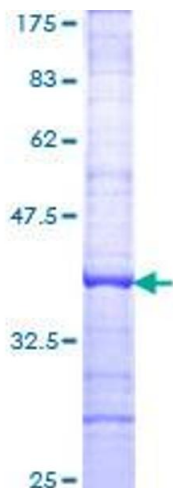


Image 1.