



Datasheet for ABIN1308699

## KIR3DL1 Protein (AA 21-120) (GST tag)



[Go to Product page](#)

### 1 Image

#### Overview

Quantity:	10 µg
Target:	KIR3DL1
Protein Characteristics:	AA 21-120
Origin:	Human
Source:	Wheat germ
Protein Type:	Recombinant
Purification tag / Conjugate:	This KIR3DL1 protein is labelled with GST tag.
Application:	Western Blotting (WB), ELISA, Affinity Purification (AP), Antibody Array (AA)

#### Product Details

Purpose:	KIR3DL1 (Human) Recombinant Protein (Q01)
Sequence:	PHMGGQDKPF LSAWPSAVVP RGGHVTLRCH YRHRFNNFML YKEDRIHVPI FHGRIFQEGF NMSPVTTAHA GNYTCRGSHP HSPTGWSAPS NPMVIMVTGN
Characteristics:	Human KIR3DL1 partial ORF ( AAH28206, 21 a.a. - 120 a.a.) recombinant protein with GST-tag at N-terminal.
Purification:	in vitro wheat germ expression system

#### Target Details

Target:	KIR3DL1
Alternative Name:	KIR3DL1 ( <a href="#">KIR3DL1 Products</a> )

## Target Details

Background:	Full Gene Name: killer cell immunoglobulin-like receptor, three domains, long cytoplasmic tail, 1 Synonyms: CD158E1,KIR,MGC119726,MGC119728,MGC126589,MGC126591,NKAT3,NKB1,NKB1B
Gene ID:	3811

## Application Details

Application Notes:	Optimal working dilution should be determined by the investigator.
Comment:	Preparation method: in vitro, wheat germ expression system Product Quality tested by: 12.5% SDS-PAGE Stained with Coomassie Blue.
Restrictions:	For Research Use only

## Handling

Buffer:	50 mM Tris-HCl, 10 mM reduced Glutathione, pH =8.0 in the elution buffer.
Handling Advice:	Aliquot to avoid repeated freezing and thawing.
Storage:	-80 °C
Storage Comment:	Best use within three months from the date of receipt of this protein.

## Images

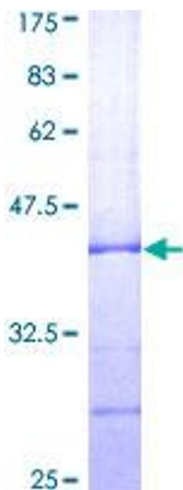


Image 1.