



[Go to Product page](#)

Datasheet for ABIN1308713

KIT Protein (AA 1-976) (GST tag)

1 Image

Overview

Quantity:	10 µg
Target:	KIT
Protein Characteristics:	AA 1-976
Origin:	Human
Source:	Wheat germ
Protein Type:	Recombinant
Purification tag / Conjugate:	This KIT protein is labelled with GST tag.
Application:	Western Blotting (WB), ELISA, Affinity Purification (AP), Antibody Array (AA)

Product Details

Purpose:	KIT (Human) Recombinant Protein (P01)
Sequence:	<p>MRGARGAWDF LCVLLLLLRV QTGSSQPSVS PGEPSPPSIH PGKSDLIVRV GDEIRLLCTD PGFVKWTFEI LDETENENKQN EWITEKAEAT NTGKYTCTNK HGLSNSIYVF VRDPAKLFLV DRSLYGKEDN DTLVRCPLTD PEVTNYSLKG CQGKPLPKDL RFIPDPKAGI MIKSVKRAYH RLCLHCSVDQ EGKSVLSEKF ILKVRPAFKA VPVVSVSKAS YLLREGEEFT VTCTIKDVSS SVYSTWKREN SQTQLQEKYN SWHHGDFNYE RQATLTISSA RVNDSGVFMC YANNTFGSAN VTTTTLEVVDK GFINIFPMIN TTVFVNDGEN VDLIVEYEAF PKPEHQWIY MNRTFTDKWE DYPKSENESEN IRYVSELHLT RLKGTEGGTY TFLVSNSDVN AAIAFNVYVN TKPEILTYDR LVNGMLQCVA AGFPEPTIDW YFCPGTEQRC SASVLPVDVQ TLNSSGPPFG KLVVQSSIDS SAFKHNGTVE CKAYNDVGKT SAYFNFAFKG NNKEQIHPHT LFTPLLIGFV IVAGMMCIIV MILTYKYLQK PMYEVQWKVV EEINGNNYVY IDPTQLPYDH KWEFPRNRLS FGKTLGAGAF GKVVEATAYG LIKSDAAMTV AVKMLKPSAH LTEREALMSE LKVLSYLGNH MNIVNLLGAC</p>

Product Details

TIGGPTLVIT EYCCYGDLLN FLRRKRDSFI CSKQEDHAEA ALYKNLLHSK ESSCSDSTNE
YMDMKPGVSY VVPTKADKRR SVRIGSYIER DVTPAIMEDD ELAIDLEDLL SFSYQVAKGM
AFLASKNCIH RDLAARNILL THGRITKICD FGLARDIKND SNYVVKGNAR LPVKWMAHES
IFNCVYTFES DVWSYGIFLW ELFSLGSSPY PGMPVDSKFY KMIKEGFRML SPEHAPAEMY
DIMKTCWDAD PLKRPTFKQI VQLIEKQISE STNHIYSNLA NCSPNRQKPV VDHSVRINSV
GSTASSSQPL LVHDDV

Characteristics: Human KIT full-length ORF (AAH71593.1, 1 a.a. - 976 a.a.) recombinant protein with GST-tag at N-terminal.

Purification: in vitro wheat germ expression system

Target Details

Target: KIT

Alternative Name: KIT ([KIT Products](#))

Background: Gene: v-kit Hardy-Zuckerman 4 feline sarcoma viral oncogene homolog
Synonyms: C-Kit, CD117, PBT, SCFR

Gene ID: 3815

Pathways: [RTK Signaling](#), [Fc-epsilon Receptor Signaling Pathway](#), [EGFR Signaling Pathway](#), [Neurotrophin Signaling Pathway](#), [Sensory Perception of Sound](#), [Stem Cell Maintenance](#), [Production of Molecular Mediator of Immune Response](#), [Regulation of long-term Neuronal Synaptic Plasticity](#)

Application Details

Application Notes: Optimal working dilution should be determined by the investigator.

Restrictions: For Research Use only

Handling

Buffer: 50 mM Tris-HCl, 10 mM reduced Glutathione, pH =8.0 in the elution buffer.

Handling Advice: Aliquot to avoid repeated freezing and thawing.

Storage: -80 °C

Storage Comment: Best use within three months from the date of receipt of this protein.

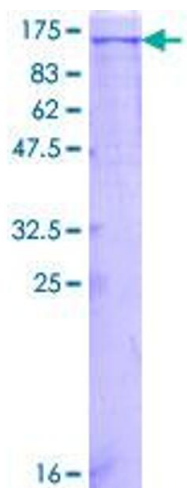


Image 1.