



[Go to Product page](#)

Datasheet for ABIN1308717

## KIT Ligand Protein (KITLG) (AA 1-245) (GST tag)

### 1 Image

#### Overview

Quantity:	10 µg
Target:	KIT Ligand (KITLG)
Protein Characteristics:	AA 1-245
Origin:	Human
Source:	Wheat germ
Protein Type:	Recombinant
Purification tag / Conjugate:	This KIT Ligand protein is labelled with GST tag.
Application:	Western Blotting (WB), ELISA, Affinity Purification (AP), Antibody Array (AA)

#### Product Details

Purpose:	KITLG (Human) Recombinant Protein (P01)
Sequence:	MKKTQTWILT CIYLQLLLLFN PLVKTEGICR NRVTNNVKDV TKLVANLPKD YMITLKYVPG MDVLPShcwi SEMVQLSDS LTDLLDKFSN ISEGLSNYSI IDKLVNIVDD LVECvKENSS KDLKKSFKSP EPRLFTPEEF FRIFNRSIDA FKDFVVASET SDCVVSSTLS PEK GKAKNPP GDSSLHWAAM ALPALFSLII GFAFGALYWK KRQPSLTRAV ENIQINEEDN EISMLQEKER EFQEV
Characteristics:	Human KITLG full-length ORF ( NP_003985.2, 1 a.a. - 245 a.a.) recombinant protein with GST-tag at N-terminal.
Purification:	in vitro wheat germ expression system

#### Target Details

Target:	KIT Ligand (KITLG)
---------	--------------------

## Target Details

Alternative Name:	KITLG ( <a href="#">KITLG Products</a> )
Background:	Full Gene Name: KIT ligand Synonyms: DKFZp686F2250,KL-1,Kitl,MGF,SCF,SF,SHEP7
Gene ID:	4254
NCBI Accession:	<a href="#">NM_003994</a>
Pathways:	<a href="#">RTK Signaling</a> , <a href="#">Fc-epsilon Receptor Signaling Pathway</a> , <a href="#">EGFR Signaling Pathway</a> , <a href="#">Neurotrophin Signaling Pathway</a>

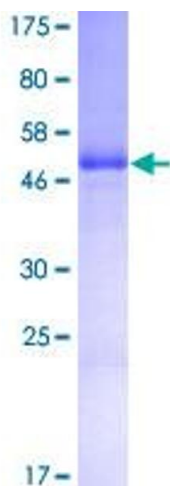
## Application Details

Application Notes:	Optimal working dilution should be determined by the investigator.
Comment:	Preparation method: in vitro, wheat germ expression system Product Quality tested by: 12.5% SDS-PAGE Stained with Coomassie Blue.
Restrictions:	For Research Use only

## Handling

Buffer:	50 mM Tris-HCl, 10 mM reduced Glutathione, pH =8.0 in the elution buffer.
Handling Advice:	Aliquot to avoid repeated freezing and thawing.
Storage:	-80 °C
Storage Comment:	Best use within three months from the date of receipt of this protein.

## Images



**Image 1.**