

Datasheet for ABIN1308731  
**KLF10/TIEG1 Protein (AA 1-480) (GST tag)**



[Go to Product page](#)

1 Image

Overview

Quantity:	25 µg
Target:	KLF10/TIEG1 (KLF10)
Protein Characteristics:	AA 1-480
Origin:	Human
Source:	Wheat germ
Protein Type:	Recombinant
Purification tag / Conjugate:	This KLF10/TIEG1 protein is labelled with GST tag.
Application:	Western Blotting (WB), ELISA, Affinity Purification (AP), Antibody Array (AA)

Product Details

Purpose:	KLF10 (Human) Recombinant Protein (P01)
Sequence:	MLNFGASLQQ TAEERMEMIS ERPKESMYSW NKTAEKSDFE AVEALMSMSC SWKSDFKKYV ENRPVTPVSD LSEEENLLPG TPDFHTIPAF CLTPPYSPSD FEPSQVSNLM APAPSTVHFK SLSDTAKPHI AAPFKEEEEKS PVSAPKLPKA QATSVIRHTA DAQLCNHQTC PMKAASILNY QNNSFRRRTH LNVEAARKNI PCAAVSPNRS KCERNTVADV DEKASAALYD FSVPSSETVI CRSQPAPVSP QQKSVLVSP AVSAGGVPPM PVICQMVPLP ANNPVTTVV PSTPPSQPPA VCPPVVMGT QVPKGAVMFV VPQPVVQSSK PPVVSPNGTR LSPIAPAPGF SPSAAKVTPQ IDSSRIRSHI CSHPGCGKTY FKSSHLKAHT RHTHTGEKPFS CSWKGCCERRF ARSDELSRHR RHTHTGEKKFA CPMCDRRFMR SDHLTKHARR HLSAKKLPNW QMEVSKLNDI ALPPTPAPTQ
Characteristics:	Human KLF10 full-length ORF ( NP_005646.1, 1 a.a. - 480 a.a.) recombinant protein with GST-tag at N-terminal.

## Product Details

---

Purification: in vitro wheat germ expression system

## Target Details

---

Target: KLF10/TIEG1 (KLF10)

Alternative Name: KLF10 ([KLF10 Products](#))

Background: Full Gene Name: Kruppel-like factor 10  
Synonyms: EGRA,TIEG,TIEG1

Gene ID: 7071

NCBI Accession: [NM\\_005655](#)

Pathways: [Stem Cell Maintenance](#)

## Application Details

---

Application Notes: Optimal working dilution should be determined by the investigator.

Comment: Preparation method: in vitro, wheat germ expression system  
Product Quality tested by: 12.5% SDS-PAGE Stained with Coomassie Blue.

Restrictions: For Research Use only

## Handling

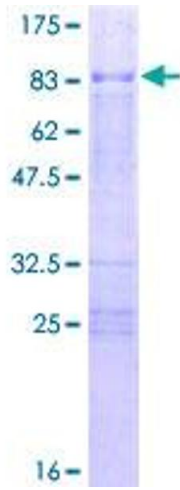
---

Buffer: 50 mM Tris-HCl, 10 mM reduced Glutathione, pH =8.0 in the elution buffer.

Handling Advice: Aliquot to avoid repeated freezing and thawing.

Storage: -80 °C

Storage Comment: Best use within three months from the date of receipt of this protein.



**Image 1.**