



[Go to Product page](#)

Datasheet for ABIN1308736

## KLF11 Protein (AA 1-512) (GST tag)

### 1 Image

#### Overview

Quantity:	25 µg
Target:	KLF11
Protein Characteristics:	AA 1-512
Origin:	Human
Source:	Wheat germ
Protein Type:	Recombinant
Purification tag / Conjugate:	This KLF11 protein is labelled with GST tag.
Application:	ELISA, Western Blotting (WB), Affinity Purification (AP), Antibody Array (AA)

#### Product Details

Purpose:	KLF11 (Human) Recombinant Protein (P01)
Sequence:	MHTPDFAGPD DARAVDIMDI CESILERKRH DSERSTCSIL EQTDMEAVEA LVCMSWQQR SQKGDLLRIR PLTPVSDSGD VTTTVHMDAA TPELPKDFHS LSTLCITPPQ SPDLVEPSTR TPVSPQVTDS KACTATDVLQ SSAVVARALS GGAERGLLGL EPVPSSPCRA KGTSVIRHTG ESPAACFPTI QTPDCRLSDS REGEEQLLGH FETLQDTHLT DSLLSTNLVS CQPCLHKSGG LLLTDKGQQA GWPGAVQTCS PKNYENDLPR KTTPLISVSV PAPPVLCQMI PVTGQSSMLP AFLKPPPQLS VGTVRPILAQ AAPAPQPVFV GPAVPQGAVM LVLPQGALPP PAPCAANVMA AGNTKLLPLA PAPVFITSSQ NCV PQVDFSR RRNYVCSFPG CRKTYFKSSH LKAHLRHTTG EKPFNCSDWG CDKKFARSDE LSRHRRTHTG EKKFVCPVCD RRFMRSDHLT KHARRHMTTK KIPGWQAEVG KLNRIASAES PGSPLVSMMPA SA
Characteristics:	Human KLF11 full-length ORF ( NP_003588.1, 1 a.a. - 512 a.a.) recombinant protein with GST-tag at N-terminal.

## Product Details

---

Purification: in vitro wheat germ expression system

## Target Details

---

Target: KLF11

Alternative Name: KLF11 ([KLF11 Products](#))

Background: Full Gene Name: Kruppel-like factor 11  
Synonyms: FKLF,FKLF1,MODY7,TIEG2,Tieg3

Gene ID: 8462

NCBI Accession: [NM\\_003597](#)

## Application Details

---

Application Notes: Optimal working dilution should be determined by the investigator.

Comment: Preparation method: in vitro, wheat germ expression system  
Product Quality tested by: 12.5% SDS-PAGE Stained with Coomassie Blue.

Restrictions: For Research Use only

## Handling

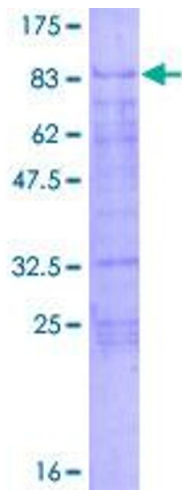
---

Buffer: 50 mM Tris-HCl, 10 mM reduced Glutathione, pH =8.0 in the elution buffer.

Handling Advice: Aliquot to avoid repeated freezing and thawing.

Storage: -80 °C

Storage Comment: Best use within three months from the date of receipt of this protein.



**Image 1.**