



[Go to Product page](#)

Datasheet for ABIN1308737

## KLF11 Protein (AA 404-512) (GST tag)

### 1 Image

#### Overview

Quantity:	10 µg
Target:	KLF11
Protein Characteristics:	AA 404-512
Origin:	Human
Source:	Wheat germ
Protein Type:	Recombinant
Purification tag / Conjugate:	This KLF11 protein is labelled with GST tag.
Application:	ELISA, Western Blotting (WB), Affinity Purification (AP), Antibody Array (AA)

#### Product Details

Purpose:	KLF11 (Human) Recombinant Protein (Q01)
Sequence:	TYFKSSHLKA HLRHTHTGEKP FNCSWDGCDK KFARSDELSR HRRHTHTGEKK FVCPVCDRRF MRSDHLTKHA RRHMTTKKIP GWQAEVGKLN RIASAESPGS PLVSMPASA
Characteristics:	Human KLF11 partial ORF ( NP_003588, 404 a.a. - 512 a.a.) recombinant protein with GST-tag at N-terminal.
Purification:	in vitro wheat germ expression system

#### Target Details

Target:	KLF11
Alternative Name:	KLF11 ( <a href="#">KLF11 Products</a> )

## Target Details

Background:	Full Gene Name: Kruppel-like factor 11 Synonyms: FKLF,FKLF1,MODY7,TIEG2,Tieg3
Gene ID:	8462
NCBI Accession:	<a href="#">NM_003597</a>

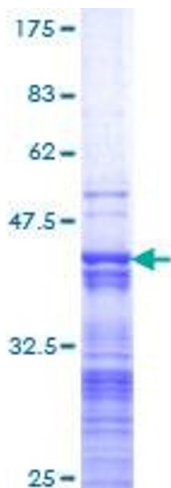
## Application Details

Application Notes:	Optimal working dilution should be determined by the investigator.
Comment:	Preparation method: in vitro, wheat germ expression system Product Quality tested by: 12.5% SDS-PAGE Stained with Coomassie Blue.
Restrictions:	For Research Use only

## Handling

Buffer:	50 mM Tris-HCl, 10 mM reduced Glutathione, pH =8.0 in the elution buffer.
Handling Advice:	Aliquot to avoid repeated freezing and thawing.
Storage:	-80 °C
Storage Comment:	Best use within three months from the date of receipt of this protein.

## Images



**Image 1.**