



[Go to Product page](#)

Datasheet for ABIN1308751
KLF3 Protein (AA 1-345) (GST tag)

1 Image

Overview

Quantity:	25 µg
Target:	KLF3
Protein Characteristics:	AA 1-345
Origin:	Human
Source:	Wheat germ
Protein Type:	Recombinant
Purification tag / Conjugate:	This KLF3 protein is labelled with GST tag.
Application:	ELISA, Western Blotting (WB), Affinity Purification (AP), Antibody Array (AA)

Product Details

Purpose:	KLF3 (Human) Recombinant Protein (P01)
Sequence:	MLMFDPVPVK QEAMDPVSVS YPSNYMESMK PNKYGVIYST PLPEKFFQTP EGLSHGIQME PVDLTVNKRS SPPSAGNSPS SLKFPSSHRR ASPGLSMPSS SPPIKKYSPP SPGVQPFQVP LSMPPVMAAA LSRHGIRSPG ILPVIQPVVV QVPVPMYTS LQQPLMVSL S EEMENSSSSM QVPVIESYEK PISQKKIKIE PGIEPQRTDY YPEEMSPPLM NSVSPPQALL QENHPSVIVQ PGKRPLPVES PDTQRKRRIH RCDYDGCNKV YTKSSHLKAH RRTHTGEKPY KCTWEGCTWK FARSGELTRH FRKHTGIKPF QCPDCDRSFS RSDHLALHRK RHMLV
Characteristics:	Human KLF3 full-length ORF (NP_057615.2, 1 a.a. - 345 a.a.) recombinant protein with GST-tag at N-terminal.
Purification:	in vitro wheat germ expression system

Target Details

Target:	KLF3
Alternative Name:	KLF3 (KLF3 Products)
Background:	Full Gene Name: Kruppel-like factor 3 (basic) Synonyms: BKLF,MGC48279
Gene ID:	51274
NCBI Accession:	NM_016531

Application Details

Application Notes:	Optimal working dilution should be determined by the investigator.
Comment:	Preparation method: in vitro, wheat germ expression system Product Quality tested by: 12.5% SDS-PAGE Stained with Coomassie Blue.
Restrictions:	For Research Use only

Handling

Buffer:	50 mM Tris-HCl, 10 mM reduced Glutathione, pH =8.0 in the elution buffer.
Handling Advice:	Aliquot to avoid repeated freezing and thawing.
Storage:	-80 °C
Storage Comment:	Best use within three months from the date of receipt of this protein.

Images

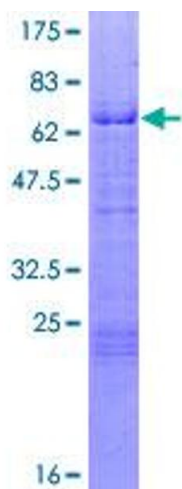


Image 1.