



[Go to Product page](#)

Datasheet for ABIN1308775

KLHDC10 Protein (AA 1-442) (GST tag)

1 Image

Overview

Quantity:	25 µg
Target:	KLHDC10
Protein Characteristics:	AA 1-442
Origin:	Human
Source:	Wheat germ
Protein Type:	Recombinant
Purification tag / Conjugate:	This KLHDC10 protein is labelled with GST tag.
Application:	ELISA, Western Blotting (WB), Affinity Purification (AP), Antibody Array (AA)

Product Details

Purpose:	KIAA0265 (Human) Recombinant Protein (P01)
Sequence:	MSAAQGWDRN RRRGGGAAGA GGGGSGAGGG SGGSGGRGTG QLNRVQLSG RPHLPGKKKI RWDPVRRRFI QSCPIIRIPN RFLRGHRPPP ARSGHRCVAD NTNLYVFGGY NPDYDESGGP DNEDYPLFRE LWRYHFATGV WHQMGTDGYM PRELASMSLV LHGNNLLVFG GTGIPFGESN GNGVHVCNVK YKRWALLSCR GKKPSRIYGQ AMAIINGSLY VFGGTTGYIY STDLHKLDLN TREWTQLKPN NLSCDLPEER YRHEIAHDGQ RIYVLGGGTS WTAYSLNKH AYNLGTNAWE EIATKPHEKI GFPAARRCHS CVQIKNDVFI CGGYNGEVIL GDIWKLNLQT FQWVKLPATM PEPVYFHCAA VTPAGCMYIH GGVVNIHENK RTGSLFKIWL VVPSLLELAW EKLLAAFPNL ANLSRTQLLH LGLTQGLIER LK
Characteristics:	Human KIAA0265 full-length ORF (AAH44884.1, 1 a.a. - 442 a.a.) recombinant protein with GST-tag at N-terminal.

Product Details

Purification: in vitro wheat germ expression system

Target Details

Target: KLHDC10

Alternative Name: KLHDC10 ([KLHDC10 Products](#))

Background: Full Gene Name: kelch domain containing 10
Synonyms: KIAA0265,slim

Gene ID: 23008

Application Details

Application Notes: Optimal working dilution should be determined by the investigator.

Comment: Preparation method: in vitro, wheat germ expression system
Product Quality tested by: 12.5% SDS-PAGE Stained with Coomassie Blue.

Restrictions: For Research Use only

Handling

Buffer: 50 mM Tris-HCl, 10 mM reduced Glutathione, pH =8.0 in the elution buffer.

Handling Advice: Aliquot to avoid repeated freezing and thawing.

Storage: -80 °C

Storage Comment: Best use within three months from the date of receipt of this protein.

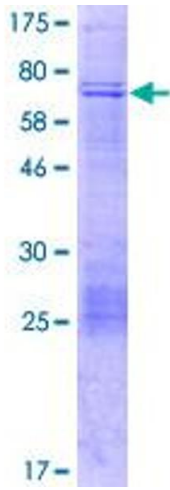


Image 1.