



[Go to Product page](#)

Datasheet for ABIN1308779

## KLHDC3 Protein (AA 1-102) (GST tag)

### 1 Image

#### Overview

Quantity:	10 µg
Target:	KLHDC3
Protein Characteristics:	AA 1-102
Origin:	Human
Source:	Wheat germ
Protein Type:	Recombinant
Purification tag / Conjugate:	This KLHDC3 protein is labelled with GST tag.
Application:	ELISA, Western Blotting (WB), Affinity Purification (AP), Antibody Array (AA)

#### Product Details

Purpose:	KLHDC3 (Human) Recombinant Protein (Q01)
Sequence:	MLRWTVHLEG GPRRVNHA AV AVGHVYSFG GYCSGEDYET LRQIDVHIFN AVSLRWTKLP PVKSAIRGQA PVVPYMRYPGH STVLIDDTVL LWGGRNDTEG AC
Characteristics:	Human KLHDC3 partial ORF ( NP_476502, 1 a.a. - 102 a.a.) recombinant protein with GST-tag at N-terminal.
Purification:	in vitro wheat germ expression system

#### Target Details

Target:	KLHDC3
Alternative Name:	KLHDC3 ( <a href="#">KLHDC3 Products</a> )

## Target Details

Background:	Full Gene Name: kelch domain containing 3 Synonyms: PEAS,RP1-20C7.3,dJ20C7.3,hPEAS
Gene ID:	116138
NCBI Accession:	<a href="#">NM_057161</a>
Pathways:	<a href="#">Chromatin Binding</a> , <a href="#">ER-Nucleus Signaling</a>

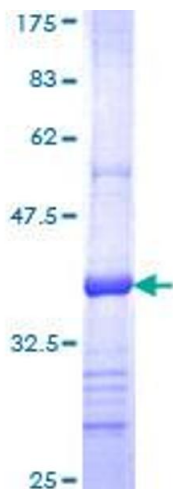
## Application Details

Application Notes:	Optimal working dilution should be determined by the investigator.
Comment:	Preparation method: in vitro, wheat germ expression system Product Quality tested by: 12.5% SDS-PAGE Stained with Coomassie Blue.
Restrictions:	For Research Use only

## Handling

Buffer:	50 mM Tris-HCl, 10 mM reduced Glutathione, pH =8.0 in the elution buffer.
Handling Advice:	Aliquot to avoid repeated freezing and thawing.
Storage:	-80 °C
Storage Comment:	Best use within three months from the date of receipt of this protein.

## Images



**Image 1.**