

Datasheet for ABIN1308792

## KLHL10 Protein (AA 1-608) (GST tag)



[Go to Product page](#)

### 1 Image

#### Overview

Quantity:	10 µg
Target:	KLHL10
Protein Characteristics:	AA 1-608
Origin:	Human
Source:	Wheat germ
Protein Type:	Recombinant
Purification tag / Conjugate:	This KLHL10 protein is labelled with GST tag.
Application:	ELISA, Western Blotting (WB), Affinity Purification (AP), Antibody Array (AA)

#### Product Details

Purpose:	KLHL10 (Human) Recombinant Protein (P01)
Sequence:	MEMESAAAST RFHQPHMERK MSAMACEIFN ELRLEGKLCD VVIKVNQFEF SAHKNILCSC SSYFRALFTS GWNNTTEKKVY NIPGISPDMM KLIIEYAYTR TVPITPDNVE KLLAAADQFN IMGIVRGCCE FLKSELCLDN CIGICKFTDY YCPELRQKA YMFILHNREE MVKVSAEFLE LSVTELDKDI EKDELNVKQE DAVFEAILKW ISHDPQNRKQ HISILLPKVR LALMHAIEYFM NNVKMNDYVK DSEECKPVII NALKAMYDLN MNGPSNSDFT NPLTRPRLPY AILFAIGGWS GGSPTNAIEA YDARADRWVN VTCEEESPPRA YHGAAYLKGY VYIIGGFDSV DYFNSVKRFD PVKKTWHQVA PMHSRRCYVS VTVLGNFIYA MGGFDGYVRL STAERYEPET NQWTLIAPMH EQRSDASATT LYGKVYICGG FNGNECLFTA EYNTESNQQ TVIAPMRSRR SGIGVIAYGE HVYAVGGFDG ANRLRSAEAY SPVANTWRTI PTMFNPRSNF GIEVVDDLLF VGGFNGFTT TFNVECYDEK TDEWYDAHDM SIYRSALSCC VVPGLANVEE YAARRDNFPG LELRDEVKYS ASTSTLPV

## Product Details

---

Characteristics: Human KLHL10 full-length ORF ( AAH67753.1, 1 a.a. - 608 a.a.) recombinant protein with GST-tag at N-terminal.

---

Purification: in vitro wheat germ expression system

---

## Target Details

---

Target: KLHL10

---

Alternative Name: KLHL10 ([KLHL10 Products](#))

---

Background: Full Gene Name: kelch-like 10 (Drosophila)  
Synonyms: FLJ32662

---

Gene ID: 317719

---

## Application Details

---

Application Notes: Optimal working dilution should be determined by the investigator.

---

Comment: Preparation method: in vitro, wheat germ expression system  
Product Quality tested by: 12.5% SDS-PAGE Stained with Coomassie Blue.

---

Restrictions: For Research Use only

---

## Handling

---

Buffer: 50 mM Tris-HCl, 10 mM reduced Glutathione, pH =8.0 in the elution buffer.

---

Handling Advice: Aliquot to avoid repeated freezing and thawing.

---

Storage: -80 °C

---

Storage Comment: Best use within three months from the date of receipt of this protein.

---

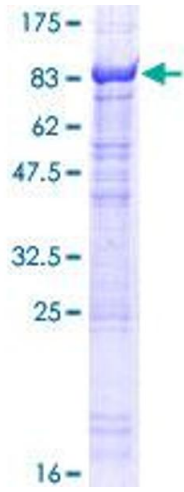


Image 1.