



[Go to Product page](#)

Datasheet for ABIN1308794

KLHL11 Protein (AA 1-708) (GST tag)

1 Image

Overview

Quantity:	10 µg
Target:	KLHL11
Protein Characteristics:	AA 1-708
Origin:	Human
Source:	Wheat germ
Protein Type:	Recombinant
Purification tag / Conjugate:	This KLHL11 protein is labelled with GST tag.
Application:	ELISA, Western Blotting (WB), Affinity Purification (AP), Antibody Array (AA)

Product Details

Purpose:	KLHL11 (Human) Recombinant Protein (P01)
Sequence:	MAAAVA AAAAASLQV LEMESMETAA AGSAGLAAEV RSGTVDVFGP GPGISAMEAS GGDPGPEAED FECSSHCESEL SWRQNEQRRQ GLFCDITLCF GGAGGREFRA HRSVLAAATE YFTPLLSGQF SESRSGRVEM RKWSSEPGPE PDTVEAVIEY MYTGRIRVST GSVHEVLELA DRFLLIRLKE FCGEFLK KKL HLSNCVAIHS LAHMYTLSQL ALKAADMIRR NFHKVIQDEE FYTLPFHLIR DWLSDLEITV DSEEVLFETV LKWWQRNAEE RERYFEELFK LLRLSQMKPT YLTRHVKPER LVANNEVCVK LVADAVERHA LRAENIQSGT CQHPTSHVSL LPRYGQNMDV IMVIGGVSEG GDYLSECVGY FVDEDRWVNL PHIHNHLDGH AVAVTESYVY VAGSMEPGFA KTVERYNP NL NTWEHVCSLM TRKHSFGLTE VKGKLYSIGG HGNFSPGFKD VTVYNPEL DK WHNLESAPKI LRDVKALAIE DRFVYIAART PVDRDTE DGL KAVITCYDTE TRQWQDVESL PLIDNYCFFQ MSVVNSNFYQ TASCCKPSYC LENEEAVRKI ASQVSDEILE SLPPEVLSIE GAAICYKDD VFIIGGWKNS DDIDKQYRKE AYRYCAERKR WMLLPMPQP RCRATACHVR

Product Details

IPYRYLHGTQ RYPMPQNLMW QKDRIRQMQE IHRHALNMRR VPSSQIEC

Characteristics: Human KLHL11 full-length ORF (NP_060613.1, 1 a.a. - 708 a.a.) recombinant protein with GST-tag at N-terminal.

Purification: in vitro wheat germ expression system

Target Details

Target: KLHL11

Alternative Name: KLHL11 ([KLHL11 Products](#))

Background: Full Gene Name: kelch-like 11 (Drosophila)
Synonyms: FLJ10572

Gene ID: 55175

NCBI Accession: [NM_018143](#)

Application Details

Application Notes: Optimal working dilution should be determined by the investigator.

Comment: Preparation method: in vitro, wheat germ expression system
Product Quality tested by: 12.5% SDS-PAGE Stained with Coomassie Blue.

Restrictions: For Research Use only

Handling

Buffer: 50 mM Tris-HCl, 10 mM reduced Glutathione, pH =8.0 in the elution buffer.

Handling Advice: Aliquot to avoid repeated freezing and thawing.

Storage: -80 °C

Storage Comment: Best use within three months from the date of receipt of this protein.

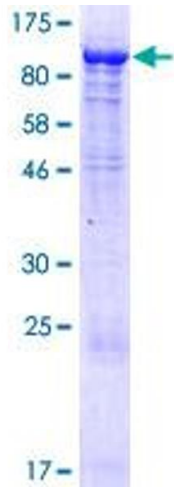


Image 1.