

Datasheet for ABIN1308799

KLHL14 Protein (AA 1-628) (GST tag)



[Go to Product page](#)

1 Image

Overview

Quantity:	10 µg
Target:	KLHL14
Protein Characteristics:	AA 1-628
Origin:	Human
Source:	Wheat germ
Protein Type:	Recombinant
Purification tag / Conjugate:	This KLHL14 protein is labelled with GST tag.
Application:	ELISA, Western Blotting (WB), Affinity Purification (AP), Antibody Array (AA)

Product Details

Purpose:	KLHL14 (Human) Recombinant Protein (P01)
Sequence:	MSRSGDRTST FDP SHSDNLL HGLNLLWRKQ LFC DVT LTAQ GQQFHCHKAV LASCSQYFRS LFSSHPPLGG GVGGQDGLGA PKDQQQPPQQ QPSQQQPPP QEEP GTPSSS PDDKLLTSPR AINNLVLQGC SSIGLRLVLE YLYTANVTLS LDTVEEVLSV SKILHIPQVT KLCVQFLNDQ ISVQNYKQVC KIAALHGLEE TKKLANKYLV EDVLLLNFEEMRALLDSLPP PVESELALFQ MSVLWLEHDR ETRMQYAPDL MKRLRFALIP APELVERVQS VDFMRTDPVC QKLLLDAMNY HLMPFRQHCR QSLASRIRSN KKMLLLVGGL PPGPDRLPSN LVQYYDDEKK TWKILTIMPY NSAHHCVVEV ENFLFVLGGE DQWNPNGKHS TNFVSRYDPR FNSWIQLPPM QERRASFYAC RLDKHLYVIG GRNETGYLSS VECYNLETNE WRYVSSLPQP LAAHAGAVHN GKIYISGGVH NGEYVPWLYC YDPVMDVWAR KQDMNTKRAI HTLAVMNDRL YAIGGNHLKG FSHLDVMLVE CYDPKGDQWN ILQTPILEGR SGP GCAVLDD SIYLVGGYSW SMGAYKSSTI CYCPEKGTWT ELEGDVAEPL AGPACVTVIL PSCVPYNK

Product Details

Characteristics: Human KLHL14 full-length ORF (NP_065856.1, 1 a.a. - 628 a.a.) recombinant protein with GST-tag at N-terminal.

Purification: in vitro wheat germ expression system

Target Details

Target: KLHL14

Alternative Name: KLHL14 ([KLHL14 Products](#))

Background: Full Gene Name: kelch-like 14 (Drosophila)
Synonyms:

Gene ID: 57565

NCBI Accession: [NM_020805](#)

Application Details

Application Notes: Optimal working dilution should be determined by the investigator.

Comment: Preparation method: in vitro, wheat germ expression system
Product Quality tested by: 12.5% SDS-PAGE Stained with Coomassie Blue.

Restrictions: For Research Use only

Handling

Buffer: 50 mM Tris-HCl, 10 mM reduced Glutathione, pH =8.0 in the elution buffer.

Handling Advice: Aliquot to avoid repeated freezing and thawing.

Storage: -80 °C

Storage Comment: Best use within three months from the date of receipt of this protein.

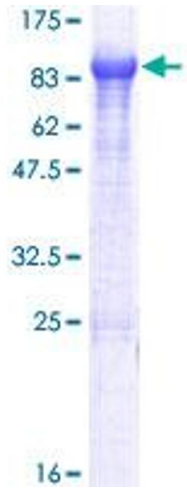


Image 1.