



[Go to Product page](#)

Datasheet for ABIN1308811

KLHL23 Protein (AA 1-558) (GST tag)

1 Image

Overview

Quantity:	10 µg
Target:	KLHL23
Protein Characteristics:	AA 1-558
Origin:	Human
Source:	Wheat germ
Protein Type:	Recombinant
Purification tag / Conjugate:	This KLHL23 protein is labelled with GST tag.
Application:	ELISA, Western Blotting (WB), Antibody Array (AA), Affinity Purification (AP)

Product Details

Purpose:	KLHL23 (Human) Recombinant Protein (P01)
Sequence:	MALKGQEDI YLFKDSTHPV DFLDAFRFTY LDGLFTDITL QCPSGIIFHC HRAVLAACSN YFKAMFTADM KEKFKNKIKL SGIHHDILEG LVNYAYTSQI EITKRNQSL LEAADLLQFL SVKKACERFL VRHLIDIDNCI GMHSFAEFHV CPELEKESRR ILCSKFKEVW QQEEFLEISL EKFLFILSRK NLSVWKEEI IEPVIKWTAH DVENRIECLY NLLSYINIDI DPVYLKTALG LQRSCLLTEN KIRSLIYNAL NPMHKEISQR STATMYIIGG YYWHPLSEVH IWDPLTNVWI QGAEIPDYTR ESYGVTCLGP NIYVTGGYRT DNIEALDTVW IYNSESDEWT EGLPMLNARY YHCAVTLGGC VYALGGYRKG APAEEAEFYD PLKEKWIPIA NMIKGVGNAT ACVLHDVIYV IGGHCGYRGS CTYDKVQSYN SDINEWSLIT SSPHPEYGLC SVPFENKLYL VGGQTTITEC YDPEQNEWRE IAPMMERRME CGAVIMNGCI YVTGGYSYSK GTYLQSIKEY DPDLNKWEIV GNLPSAMRSH GCVCVYNV
Characteristics:	Human KLHL23 full-length ORF (NP_653312.2, 1 a.a. - 558 a.a.) recombinant protein with GST-

Product Details

tag at N-terminal.

Purification: in vitro wheat germ expression system

Target Details

Target: KLHL23

Alternative Name: KLHL23 ([KLHL23 Products](#))

Background: Full Gene Name: kelch-like 23 (Drosophila)
Synonyms: DITHP,FLJ37812,MGC22679,MGC2610

Gene ID: 151230

NCBI Accession: [NM_144711](#)

Application Details

Application Notes: Optimal working dilution should be determined by the investigator.

Comment: Preparation method: in vitro, wheat germ expression system
Product Quality tested by: 12.5% SDS-PAGE Stained with Coomassie Blue.

Restrictions: For Research Use only

Handling

Buffer: 50 mM Tris-HCl, 10 mM reduced Glutathione, pH =8.0 in the elution buffer.

Handling Advice: Aliquot to avoid repeated freezing and thawing.

Storage: -80 °C

Storage Comment: Best use within three months from the date of receipt of this protein.

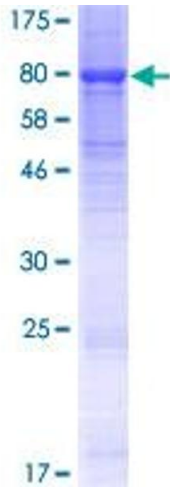


Image 1.