



[Go to Product page](#)

Datasheet for ABIN1308815

KLHL29 Protein (AA 1-503) (GST tag)

1 Image

Overview

Quantity:	10 µg
Target:	KLHL29
Protein Characteristics:	AA 1-503
Origin:	Human
Source:	Wheat germ
Protein Type:	Recombinant
Purification tag / Conjugate:	This KLHL29 protein is labelled with GST tag.
Application:	ELISA, Western Blotting (WB), Affinity Purification (AP), Antibody Array (AA)

Product Details

Purpose:	KLHL29 (Human) Recombinant Protein (P01)
Sequence:	MPGHYSLPQP PSQPLSSVVV NMPAQALYAS PQPLAVSTLP GVGQVARPGP TAVGNNGHMAG PLLPPPPPAQ PSATLPSGAP ATNGPPTTDS AHGLQMLRTI GVGKYEFTDP GHPREMLKEL NQQRRAKAFT DLKIVVEGRE FEVHQNVLAS CSLYFKDLIQ RSVQDSGQGG REKLELVLSN LQADVLELLL EFVYTGSLVI DSANAKTLE AASKFQFHTF CKVCVSFLEK QLTASNCLGV LAMAEAMQCS ELYHMAKafa LQIFPEVAAQ EEILSISKDD FIAYVSNDSL NTKAEELVYE TVIKWIKKDP ATRTQYAAEL LAVVRLPFIH PSYLLNVVDN EELIKSSEAC RDLVNEAKRY HMLPHARQEM QTPRTRPRLS AGVAEVIVLV GGRQVMGMTQ RSLVAVTCWN PQNNKWYPLA SLPFYDREFF SVVSAGDNIY LSGGMESGVT LADVWCYMSL LDNWNLVSRM TVPRCRHNSL VYDGKIYTLG GLGVAGNVDH VER
Characteristics:	Human KLHL29 full-length ORF (AAH15667.1, 1 a.a. - 503 a.a.) recombinant protein with GST-tag at N-terminal.

Product Details

Purification: in vitro wheat germ expression system

Target Details

Target: KLHL29

Alternative Name: KLHL29 ([KLHL29 Products](#))

Background: Full Gene Name: kelch-like 29 (Drosophila)
Synonyms: KBTBD9,KIAA1921

Gene ID: 114818

Application Details

Application Notes: Optimal working dilution should be determined by the investigator.

Comment: Preparation method: in vitro, wheat germ expression system
Product Quality tested by: 12.5% SDS-PAGE Stained with Coomassie Blue.

Restrictions: For Research Use only

Handling

Buffer: 50 mM Tris-HCl, 10 mM reduced Glutathione, pH =8.0 in the elution buffer.

Handling Advice: Aliquot to avoid repeated freezing and thawing.

Storage: -80 °C

Storage Comment: Best use within three months from the date of receipt of this protein.

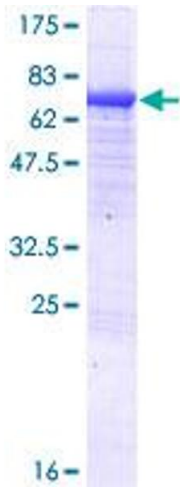


Image 1.