



[Go to Product page](#)

Datasheet for ABIN1308817

## KLHL3 Protein (AA 1-301) (GST tag)

### 1 Image

#### Overview

|                               |   |
|-------------------------------|---|
| Quantity:                     | 10 µg   |
| Target:                       | KLHL3   |
| Protein Characteristics:      | AA 1-301  |
| Origin:                       | Human   |
| Source:                       | Wheat germ  |
| Protein Type:                 | Recombinant   |
| Purification tag / Conjugate: | This KLHL3 protein is labelled with GST tag.                                  |
| Application:                  | ELISA, Western Blotting (WB), Affinity Purification (AP), Antibody Array (AA) |

#### Product Details

|                  |  |
|------------------|--|
| Purpose:         | KLHL3 (Human) Recombinant Protein (P01)  |
| Sequence:        | MEGESVKLSS QTLIQAGDDE KNQRTITVNP AHMGKAFKVM NELRSKQLLC DVMIVAEDVE<br>IEAHRVVLAA CSPYFCAMFT GDMSESKAKK IEIKDVDGQT LSKLIDYIYT AEIEVTEENV<br>QVLLPAASLL QLMDVRQNCC DFLQSQLHPT NCLGIRAFAD VHTCTDLLQQ ANAYAEQHFP<br>EVMLGEEFLS LSLDQVCSLI SSDKLTVSSE EKVFEAVISW INYEKETRLE HMAKLMEHVR<br>LPLLPRDYLV QTVEEEALIK NNNTCKDFLI EAMKYHLLPL DQRLLIK NPR TKPRTVPSLP K |
| Characteristics: | Human KLHL3 full-length ORF ( AAH34035.1, 1 a.a. - 301 a.a.) recombinant protein with GST-tag at N-terminal.   |
| Purification:    | in vitro wheat germ expression system  |

## Target Details

|                   |   |
|-------------------|---|
| Target:           | KLHL3   |
| Alternative Name: | KLHL3 ( <a href="#">KLHL3 Products</a> )  |
| Background:       | Full Gene Name: kelch-like 3 (Drosophila)<br>Synonyms: FLJ40871,KIAA1129,MGC44594 |
| Gene ID:          | 26249   |

## Application Details

|                    |  |
|--------------------|--|
| Application Notes: | Optimal working dilution should be determined by the investigator.   |
| Comment:           | Preparation method: in vitro, wheat germ expression system<br>Product Quality tested by: 12.5% SDS-PAGE Stained with Coomassie Blue. |
| Restrictions:      | For Research Use only  |

## Handling

|                  |   |
|------------------|---|
| Buffer:          | 50 mM Tris-HCl, 10 mM reduced Glutathione, pH =8.0 in the elution buffer. |
| Handling Advice: | Aliquot to avoid repeated freezing and thawing.                           |
| Storage:         | -80 °C  |
| Storage Comment: | Best use within three months from the date of receipt of this protein.    |

## Images

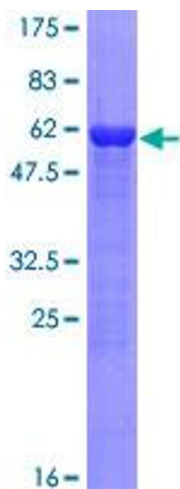


Image 1.