

Datasheet for ABIN1308829
KLHL6 Protein (AA 1-610) (GST tag)



[Go to Product page](#)

1 Image

Overview

Quantity:	10 µg
Target:	KLHL6
Protein Characteristics:	AA 1-610
Origin:	Human
Source:	Wheat germ
Protein Type:	Recombinant
Purification tag / Conjugate:	This KLHL6 protein is labelled with GST tag.
Application:	ELISA, Western Blotting (WB), Affinity Purification (AP), Antibody Array (AA)

Product Details

Purpose:	KLHL6 (Human) Recombinant Protein (P01)
Sequence:	MGDVVEKSLE GPLAPSTDEP SQKTGDLVEI LNGEKVKFDD AGLSLILQNG LETLRMENAL TDVILCVDIQ EFSCHRVLVA AASNYFRAMF CNLKEKEYEK RIIKGVDAE TMHTLLDYTY TSKALITKQN VQRVLEAANL FQFLRMVDAC ASFLTEALNP ENCVGILRLA DTHSLDSLKK QVQSYIIQNF VQILNSEEFL DLPVDTLHHI LKSDDLYVTE EAQVFETVMS WVRHKPSERL CLLPYVLENV RLPLLDPWYF VETVEADPLI RQCPEVFPLL QEARMYHLSG NEIISERTKP RMHEFQSEVF MIIGGCTKDE RFVAEVTCLD PLRRSRLEVA KLPLTEHELE SENKKWVEFA CVTLKNEVYI SGGKETQHDV WKYNSSINKW IQIEYLNIGR WRHKMVLGG KVVYVIGGFDG LQRINNVETY DPFHNCWSEA APLLVHVSSF AATSHKKKLY VIGGGPNGKL ATDKTQCYDP STNKWSLKAA MPVEAKCINA VSFRDRIYVV GGAMRALYAY SPLEDSWCLV TQLSHERASC GIAPCNNRLY ITGGRDEKNE VIATVLCWDP EAQKLTEECV LPRGVSHHGS VTIRKSYTHI RRIVPGAHSV

Product Details

Characteristics:	Human KLHL6 full-length ORF (AAH32348.1, 1 a.a. - 610 a.a.) recombinant protein with GST-tag at N-terminal.
Purification:	in vitro wheat germ expression system

Target Details

Target:	KLHL6
Alternative Name:	KLHL6 (KLHL6 Products)
Background:	Full Gene Name: kelch-like 6 (Drosophila) Synonyms: FLJ00029
Gene ID:	89857

Application Details

Application Notes:	Optimal working dilution should be determined by the investigator.
Comment:	Preparation method: in vitro, wheat germ expression system Product Quality tested by: 12.5% SDS-PAGE Stained with Coomassie Blue.
Restrictions:	For Research Use only

Handling

Buffer:	50 mM Tris-HCl, 10 mM reduced Glutathione, pH =8.0 in the elution buffer.
Handling Advice:	Aliquot to avoid repeated freezing and thawing.
Storage:	-80 °C
Storage Comment:	Best use within three months from the date of receipt of this protein.

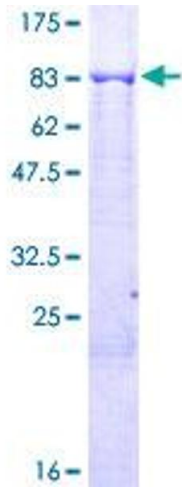


Image 1.