

Datasheet for ABIN1308839

## Kallikrein 11 Protein (KLK11) (AA 1-250) (GST tag)



[Go to Product page](#)

### 1 Image

#### Overview

Quantity:	10 µg
Target:	Kallikrein 11 (KLK11)
Protein Characteristics:	AA 1-250
Origin:	Human
Source:	Wheat germ
Protein Type:	Recombinant
Purification tag / Conjugate:	This Kallikrein 11 protein is labelled with GST tag.
Application:	Western Blotting (WB), ELISA, Affinity Purification (AP), Antibody Array (AA)

#### Product Details

Purpose:	KLK11 (Human) Recombinant Protein (P01)
Sequence:	MRILQLILLA LATGLVGGET RIIKGFECKP HSQPWQAALF EKTRLLCGAT LIAPRWLLTA AHCLKPRYIV HLGQHNLQKE EGCEQTRTAT ESFPHPGFNN SLPNKDHRND IMLVKMASPV SITWAVRPLT LSSRCVTAGT SCLISGWGST SSPQLRLPHT LRCANITIE HQKCENAYPG NITDTMVCAS VQEGGKDSCQ GDSGGPLVCN QSLQGIISWG QDPCAITRKP GVYTKVCKYV DWIQETMKNN
Characteristics:	Human KLK11 full-length ORF ( NP_006844.1, 1 a.a. - 250 a.a.) recombinant protein with GST-tag at N-terminal.
Purification:	in vitro wheat germ expression system

## Target Details

Target:	Kallikrein 11 (KLK11)
Alternative Name:	KLK11 ( <a href="#">KLK11 Products</a> )
Background:	Gene: kallikrein-related peptidase 11 Synonyms: MGC33060, PRSS20, TLSP
Gene ID:	11012
NCBI Accession:	<a href="#">NM_006853</a>
Pathways:	<a href="#">Complement System</a>

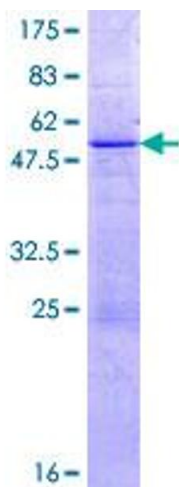
## Application Details

Application Notes:	Optimal working dilution should be determined by the investigator.
Restrictions:	For Research Use only

## Handling

Buffer:	50 mM Tris-HCl, 10 mM reduced Glutathione, pH =8.0 in the elution buffer.
Handling Advice:	Aliquot to avoid repeated freezing and thawing.
Storage:	-80 °C
Storage Comment:	Best use within three months from the date of receipt of this protein.

## Images



**Image 1.**