



[Go to Product page](#)

Datasheet for ABIN1308845

Kallikrein 13 Protein (AA 179-277) (GST tag)

1 Image

Overview

Quantity:	10 µg
Target:	Kallikrein 13 (KLK13)
Protein Characteristics:	AA 179-277
Origin:	Human
Source:	Wheat germ
Protein Type:	Recombinant
Purification tag / Conjugate:	This Kallikrein 13 protein is labelled with GST tag.
Application:	Western Blotting (WB), ELISA, Affinity Purification (AP), Antibody Array (AA)

Product Details

Purpose:	KLK13 (Human) Recombinant Protein (Q01)
Sequence:	ANIQLRSDEE CRQVYPGKIT DNMLCAGTKE GGDSCGDS GGPLVCNRTL YGIVSWGDFP CGQPDRPGVY TRVSRVYLWI RETIRKYETQ QQKWLKGPQ
Characteristics:	Human KLK13 partial ORF (NP_056411.1, 179 a.a. - 277 a.a.) recombinant protein with GST-tag at N-terminal.
Purification:	in vitro wheat germ expression system

Target Details

Target:	Kallikrein 13 (KLK13)
Alternative Name:	KLK13 (KLK13 Products)

Target Details

Background: Full Gene Name: kallikrein-related peptidase 13
Synonyms: DKFZp586J1923,KLK-L4,KLKL4

Gene ID: 26085

NCBI Accession: [NM_015596](#)

Pathways: [Complement System](#)

Application Details

Application Notes: Optimal working dilution should be determined by the investigator.

Comment: Preparation method: in vitro, wheat germ expression system
Product Quality tested by: 12.5% SDS-PAGE Stained with Coomassie Blue.

Restrictions: For Research Use only

Handling

Buffer: 50 mM Tris-HCl, 10 mM reduced Glutathione, pH =8.0 in the elution buffer.

Handling Advice: Aliquot to avoid repeated freezing and thawing.

Storage: -80 °C

Storage Comment: Best use within three months from the date of receipt of this protein.

Images

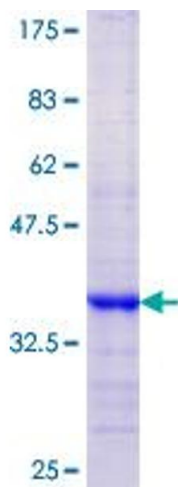


Image 1.