



[Go to Product page](#)

Datasheet for ABIN1308876

Kallikrein 9 Protein (KLK9) (AA 1-250) (GST tag)

1 Image

Overview

| | |
|-------------------------------|---|
| Quantity: | 10 µg |
| Target: | Kallikrein 9 (KLK9) |
| Protein Characteristics: | AA 1-250 |
| Origin: | Human |
| Source: | Wheat germ |
| Protein Type: | Recombinant |
| Purification tag / Conjugate: | This Kallikrein 9 protein is labelled with GST tag. |
| Application: | Western Blotting (WB), ELISA, Antibody Array (AA), Affinity Purification (AP) |

Product Details

| | |
|------------------|--|
| Purpose: | KLK9 (Human) Recombinant Protein (P01) |
| Sequence: | MKLGLLCALL SLLAGHWAD TRAIGAEECR PNSQPWQAGL FHLTRLFCGA TLISDRWLLT AAHCRKPYLW VRLGEHHLWK WEGPEQLFRV TDFPHPGFN KDLSANDHND DIMLIRLPRQ ARLSPAVQPL NLSQTCVSPG MQCLISGWGA VSSPKALFPV TLQCANISIL ENKLCHWAYP GHISDMLCA GLWEGGRGSC QGDSGGPLVC NGTLAGVVS GAEPCSRPRR PAVYTSVCHY LDWIQEIMEN |
| Characteristics: | Human KLK9 full-length ORF (NP_036447.1, 1 a.a. - 250 a.a.) recombinant protein with GST-tag at N-terminal. |
| Purification: | in vitro wheat germ expression system |

Target Details

| | |
|-------------------|---|
| Target: | Kallikrein 9 (KLK9) |
| Alternative Name: | KLK9 (KLK9 Products) |
| Background: | Gene: kallikrein-related peptidase 9 Synonyms: KLK-L3, KLK8, KLKL3 |
| Gene ID: | 284366 |
| NCBI Accession: | NM_012315 |
| Pathways: | Complement System |

Application Details

| | |
|--------------------|--|
| Application Notes: | Optimal working dilution should be determined by the investigator. |
| Restrictions: | For Research Use only |

Handling

| | |
|------------------|---|
| Buffer: | 50 mM Tris-HCl, 10 mM reduced Glutathione, pH =8.0 in the elution buffer. |
| Handling Advice: | Aliquot to avoid repeated freezing and thawing. |
| Storage: | -80 °C |
| Storage Comment: | Best use within three months from the date of receipt of this protein. |

Images

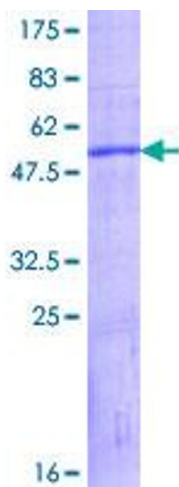


Image 1.