



Datasheet for ABIN1308904

KLRK1 Protein (AA 1-216) (GST tag)



[Go to Product page](#)

1 Image

Overview

Quantity:	25 µg
Target:	KLRK1
Protein Characteristics:	AA 1-216
Origin:	Human
Source:	Wheat germ
Protein Type:	Recombinant
Purification tag / Conjugate:	This KLRK1 protein is labelled with GST tag.
Application:	Western Blotting (WB), ELISA, Affinity Purification (AP), Antibody Array (AA)

Product Details

Purpose:	KLRK1 (Human) Recombinant Protein (P01)
Sequence:	MGWIRGRRSR HSWEMSEFHN YNLDLKKSDF STRWQKQRCV VVSKCRENA SPFFFCCFIA VAMGIRFIIM VAIWSAVFLN SLFNQEVQIP LTESYCGPCP KNWICYKNNC YQFFDESKNW YESQASCMSQ NASLLKVYSK EDQDLLKLVK SYHWMGLVHI PTNGSWQWED GSILSPNLLT IEMQKGDCA LYASSFKGYI ENCSTPNTYI CMQRTV
Characteristics:	Human KLRK1 full-length ORF (NP_031386.1, 1 a.a. - 216 a.a.) recombinant protein with GST-tag at N-terminal.
Purification:	in vitro wheat germ expression system

Target Details

Target:	KLRK1
---------	-------

Target Details

Alternative Name:	KLRK1 (KLRK1 Products)
Background:	Full Gene Name: killer cell lectin-like receptor subfamily K, member 1 Synonyms: CD314,D12S2489E,FLJ17759,FLJ75772,KLR,NKG2-D,NKG2D
Gene ID:	22914
NCBI Accession:	NM_007360
Pathways:	Activation of Innate immune Response , Cellular Response to Molecule of Bacterial Origin , Regulation of Leukocyte Mediated Immunity , Positive Regulation of Immune Effector Process

Application Details

Application Notes:	Optimal working dilution should be determined by the investigator.
Comment:	Preparation method: in vitro, wheat germ expression system Product Quality tested by: 12.5% SDS-PAGE Stained with Coomassie Blue.
Restrictions:	For Research Use only

Handling

Buffer:	50 mM Tris-HCl, 10 mM reduced Glutathione, pH =8.0 in the elution buffer.
Handling Advice:	Aliquot to avoid repeated freezing and thawing.
Storage:	-80 °C
Storage Comment:	Best use within three months from the date of receipt of this protein.

Images

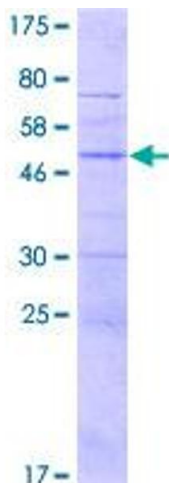


Image 1.