

Datasheet for ABIN1308920

## KPNA3 Protein (AA 422-521) (GST tag)



[Go to Product page](#)

### 1 Image

#### Overview

Quantity:	10 µg
Target:	KPNA3
Protein Characteristics:	AA 422-521
Origin:	Human
Source:	Wheat germ
Protein Type:	Recombinant
Purification tag / Conjugate:	This KPNA3 protein is labelled with GST tag.
Application:	Western Blotting (WB), ELISA, Affinity Purification (AP), Antibody Array (AA)

#### Product Details

Purpose:	KPNA3 (Human) Recombinant Protein (Q01)
Sequence:	VKDSQVVQVW LDGLKNILIM AGDEASTIAE IIEECGGLEK IEVLQQHENE DIYKLAFEII DQYFSGDDID EDPCLPEAT QGGTYNFDPT ANLQTKEFNF
Characteristics:	Human KPNA3 partial ORF ( NP_002258, 422 a.a. - 521 a.a.) recombinant protein with GST-tag at N-terminal.
Purification:	in vitro wheat germ expression system

#### Target Details

Target:	KPNA3
Alternative Name:	KPNA3 ( <a href="#">KPNA3 Products</a> )

## Target Details

---

Background: Full Gene Name: karyopherin alpha 3 (importin alpha 4)  
Synonyms: IPOA4,SRP1,SRP1gamma,SRP4,hSRP1

---

Gene ID: 3839

---

NCBI Accession: [NM\\_002267](#)

---

Pathways: [Protein targeting to Nucleus](#)

---

## Application Details

---

Application Notes: Optimal working dilution should be determined by the investigator.

---

Comment: Preparation method: in vitro, wheat germ expression system  
Product Quality tested by: 12.5% SDS-PAGE Stained with Coomassie Blue.

---

Restrictions: For Research Use only

---

## Handling

---

Buffer: 50 mM Tris-HCl, 10 mM reduced Glutathione, pH =8.0 in the elution buffer.

---

Handling Advice: Aliquot to avoid repeated freezing and thawing.

---

Storage: -80 °C

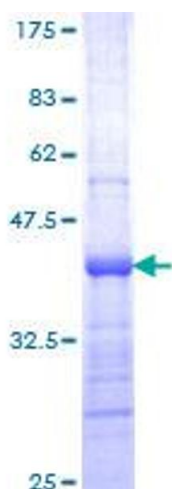
---

Storage Comment: Best use within three months from the date of receipt of this protein.

---

## Images

---



**Image 1.**