



[Go to Product page](#)

Datasheet for ABIN1308933

K-RAS Protein (AA 1-188) (GST tag)

1 Image

Overview

| | |
|-------------------------------|---|
| Quantity: | 10 µg |
| Target: | K-RAS (KRAS) |
| Protein Characteristics: | AA 1-188 |
| Origin: | Human |
| Source: | Wheat germ |
| Protein Type: | Recombinant |
| Purification tag / Conjugate: | This K-RAS protein is labelled with GST tag. |
| Application: | Western Blotting (WB), ELISA, Affinity Purification (AP), Antibody Array (AA) |

Product Details

| | |
|------------------|---|
| Purpose: | KRAS (Human) Recombinant Protein (P01) |
| Sequence: | MTEYKLVVVG AGGVGKSALT IQLIQNHFVD EYDPTIEDSY RKQVVIDGET CLLDILD TAG HEEYSAMRDQ YMRTGEGFLC VFAINNTKSF EDIHHYREQI KRVKDS EDVP MVLVGNKCDL PSRTVDTKQA QDLARSYGIP FIETSAKTRQ GVDDAFYTLV REIRKHKEKM SKDGK KKKKK SKTKCVIM |
| Characteristics: | Human KRAS full-length ORF (AAH13572, 1 a.a. - 188 a.a.) recombinant protein with GST-tag at N-terminal. |
| Purification: | in vitro wheat germ expression system |

Target Details

| | |
|---------|--------------|
| Target: | K-RAS (KRAS) |
|---------|--------------|

Target Details

| | |
|-------------------|--|
| Alternative Name: | KRAS (KRAS Products) |
| Target Type: | Viral Protein |
| Background: | Full Gene Name: v-Ki-ras2 Kirsten rat sarcoma viral oncogene homolog Synonyms: C-K-RAS,K-RAS2A,K-RAS2B,K-RAS4A,K-RAS4B,KI-RAS,KRAS1,KRAS2,NS3,RASK2 |
| Gene ID: | 3845 |

Application Details

| | |
|--------------------|--|
| Application Notes: | Optimal working dilution should be determined by the investigator. |
| Comment: | Preparation method: in vitro, wheat germ expression system Product Quality tested by: 12.5% SDS-PAGE Stained with Coomassie Blue. |
| Restrictions: | For Research Use only |

Handling

| | |
|------------------|---|
| Buffer: | 50 mM Tris-HCl, 10 mM reduced Glutathione, pH =8.0 in the elution buffer. |
| Handling Advice: | Aliquot to avoid repeated freezing and thawing. |
| Storage: | -80 °C |
| Storage Comment: | Best use within three months from the date of receipt of this protein. |

Images

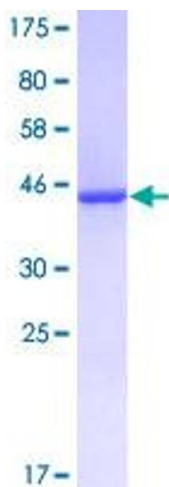


Image 1.