



[Go to Product page](#)

Datasheet for ABIN1308935

## K-RAS Protein (AA 16-125) (GST tag)

### 1 Image

#### Overview

Quantity:	10 µg
Target:	K-RAS (KRAS)
Protein Characteristics:	AA 16-125
Origin:	Human
Source:	Wheat germ
Protein Type:	Recombinant
Purification tag / Conjugate:	This K-RAS protein is labelled with GST tag.
Application:	Western Blotting (WB), ELISA, Affinity Purification (AP), Antibody Array (AA)

#### Product Details

Purpose:	KRAS (Human) Recombinant Protein (Q01)
Sequence:	KSALTIQLIQ NHFVDEYDPT IEDSYRKQVV IDGETCLLDI LDTAGQEEYS AMRDQYMRTG EGFLCVFAIN NTKSFEDIHH YREQIKRVKD SEDVPMVLVG NKCDLPSRTV
Characteristics:	Human KRAS partial ORF ( NP_004976, 16 a.a. - 125 a.a.) recombinant protein with GST-tag at N-terminal.
Purification:	in vitro wheat germ expression system

#### Target Details

Target:	K-RAS (KRAS)
Alternative Name:	KRAS ( <a href="#">KRAS Products</a> )

## Target Details

Target Type:	Viral Protein
Background:	Full Gene Name: v-Ki-ras2 Kirsten rat sarcoma viral oncogene homolog Synonyms: C-K-RAS,K-RAS2A,K-RAS2B,K-RAS4A,K-RAS4B,KI-RAS,KRAS1,KRAS2,NS3,RASK2
Gene ID:	3845
NCBI Accession:	<a href="#">NM_004985</a>

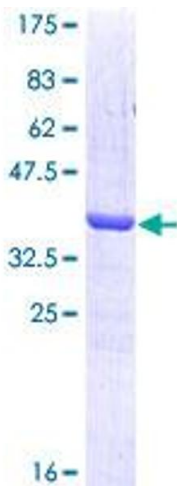
## Application Details

Application Notes:	Optimal working dilution should be determined by the investigator.
Comment:	Preparation method: in vitro, wheat germ expression system Product Quality tested by: 12.5% SDS-PAGE Stained with Coomassie Blue.
Restrictions:	For Research Use only

## Handling

Buffer:	50 mM Tris-HCl, 10 mM reduced Glutathione, pH =8.0 in the elution buffer.
Handling Advice:	Aliquot to avoid repeated freezing and thawing.
Storage:	-80 °C
Storage Comment:	Best use within three months from the date of receipt of this protein.

## Images



**Image 1.**