

Datasheet for ABIN1308941

## KREMEN2 Protein (AA 1-420) (GST tag)



[Go to Product page](#)

### 1 Image

#### Overview

Quantity:	10 µg
Target:	KREMEN2
Protein Characteristics:	AA 1-420
Origin:	Human
Source:	Wheat germ
Protein Type:	Recombinant
Purification tag / Conjugate:	This KREMEN2 protein is labelled with GST tag.
Application:	ELISA, Western Blotting (WB), Affinity Purification (AP), Antibody Array (AA)

#### Product Details

Purpose:	KREMEN2 (Human) Recombinant Protein (P01)
Sequence:	MGTQALQGFL FLLFLPLLQP RGASAGSLHS PGLSECFQVN GADYRGHQNR TGPRGAGRPC LFDWDTQQHS YSSASDPHGR WGLGAHNFCR NPDGDVQPWC YVAETEEGIY WRYCDIPSCH MPGYLGCFVD SGAPPALSGP SGTSTKLTQV VCLRFCRMKG YQLAGVEAGY ACFCGSESDL ARGRLAPATD CDQICFGHPG QLCGGDGR LG VYEVSVGSCQ GNWTAPQGV I YSPDFPDEYG PDRNCSWALG PPGAAL ELTF RLFELADPRD RLELRDAASG SLLRAFDGAR PPPSGPLRLG TAALLLTFRS DARGHAQGFA LTYRGLQDAA EDPEAPEGSA QTPAAPLDGA NVSCSPRPGA PPAAIGGAVC WLREKGP RRW GLPGAPGEAG LCGTNSPEGW PCPAPPGTPR LRVLPRATGL
Characteristics:	Human KREMEN2 full-length ORF ( NP_078783.1, 1 a.a. - 420 a.a.) recombinant protein with GST-tag at N-terminal.
Purification:	in vitro wheat germ expression system

## Target Details

Target:	KREMEN2
Alternative Name:	KREMEN2 ( <a href="#">KREMEN2 Products</a> )
Background:	Full Gene Name: kringle containing transmembrane protein 2 Synonyms: KRM2,MGC10791,MGC16709
Gene ID:	79412
NCBI Accession:	<a href="#">NM_024507</a>
Pathways:	<a href="#">WNT Signaling</a>

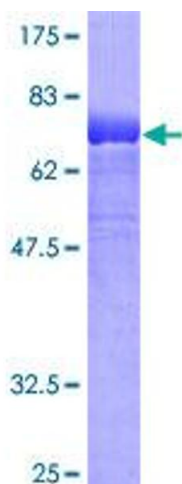
## Application Details

Application Notes:	Optimal working dilution should be determined by the investigator.
Comment:	Preparation method: in vitro, wheat germ expression system Product Quality tested by: 12.5% SDS-PAGE Stained with Coomassie Blue.
Restrictions:	For Research Use only

## Handling

Buffer:	50 mM Tris-HCl, 10 mM reduced Glutathione, pH =8.0 in the elution buffer.
Handling Advice:	Aliquot to avoid repeated freezing and thawing.
Storage:	-80 °C
Storage Comment:	Best use within three months from the date of receipt of this protein.

## Images



**Image 1.**