



[Go to Product page](#)

Datasheet for ABIN1308949

## KRR1 Protein (AA 1-381) (GST tag)

### 1 Image

#### Overview

Quantity:	10 µg
Target:	KRR1
Protein Characteristics:	AA 1-381
Origin:	Human
Source:	Wheat germ
Protein Type:	Recombinant
Purification tag / Conjugate:	This KRR1 protein is labelled with GST tag.
Application:	ELISA, Western Blotting (WB), Affinity Purification (AP), Antibody Array (AA)

#### Product Details

Purpose:	KRR1 (Human) Recombinant Protein (P01)
Sequence:	MASPSLERPE KGAGKSEFRN QKPKPENQDE SELLTVPDGW KEPAFSKEDN PRGLLEESSF ATLFPKYREA YLKECWPLVQ KALNEHHVNA TLDLIEGSMT VCTTKKTFDP YIIIRARDLI KLLARSVSFE QAVRILQDDV ACDIKIGSL VRNKERFVKR RQLIGPKGS TLKALELLTN CYIMVQGNTV SAIGPFSGLK EVRKVALDTM KNIHPIYNIK SLMIKRELAK DSELRSQSWE RFLPQFKHKN VNKRKEPKKK TVKKEYTPFP PPQPESQIDK ELASGEYFLK ANQKKRQKME AIKAKQAEAI SKRQEERNA FIPPKEKPIV KPKEASTETK IDVASIKEKV KKAKNKKLGA LTAEIIALKM EADEKKKKKK K
Characteristics:	Human KRR1 full-length ORF ( AAH26107.1, 1 a.a. - 381 a.a.) recombinant protein with GST-tag at N-terminal.
Purification:	in vitro wheat germ expression system

## Target Details

Target:	KRR1
Alternative Name:	KRR1 ( <a href="#">KRR1 Products</a> )
Background:	Full Gene Name: KRR1, small subunit (SSU) processome component, homolog (yeast) Synonyms: HRB2,RIP-1
Gene ID:	11103

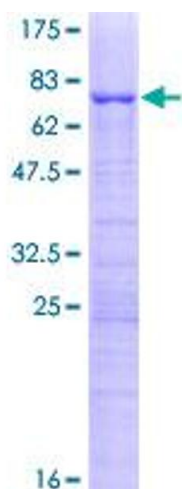
## Application Details

Application Notes:	Optimal working dilution should be determined by the investigator.
Comment:	Preparation method: in vitro, wheat germ expression system Product Quality tested by: 12.5% SDS-PAGE Stained with Coomassie Blue.
Restrictions:	For Research Use only

## Handling

Buffer:	50 mM Tris-HCl, 10 mM reduced Glutathione, pH =8.0 in the elution buffer.
Handling Advice:	Aliquot to avoid repeated freezing and thawing.
Storage:	-80 °C
Storage Comment:	Best use within three months from the date of receipt of this protein.

## Images



**Image 1.**