

Datasheet for ABIN1308983

Keratin 25 Protein (KRT25) (AA 1-450) (GST tag)



[Go to Product page](#)

1 Image

Overview

Quantity:	10 µg
Target:	Keratin 25 (KRT25)
Protein Characteristics:	AA 1-450
Origin:	Human
Source:	Wheat germ
Protein Type:	Recombinant
Purification tag / Conjugate:	This Keratin 25 protein is labelled with GST tag.
Application:	Western Blotting (WB), ELISA, Affinity Purification (AP), Antibody Array (AA)

Product Details

Purpose:	KRT25 (Human) Recombinant Protein (P01)
Sequence:	MSLRLLSSASR RSCPRPTTGS LRLYGGGTSF GTGNNSCGISG IGSGFSSAFG GSSSGGNTGG GNPCAGFTVN ERGLLSGNEK VTMQNLNDRL ASYLDSVHAL EEANADLEQK IKGWYEKFGP GSCRGLDHDY SRYFPIDDL KNQIIASTTS NANAVLQIDN ARLTADDFRL KYENELALHQ SVEADVNGLR RVLDEITLOR TDLEIQYETL SEEMTYLKKH HKEEMQVLQC AAGGNVNVEM NAAPGVDLTV LLNNMRAEYE ALAEQNRDA EAWFNEKSAS LQQQISEDVG ATTSARNELT EMKRTLQMLE IELQSLATK HSLECSLTET ESNYCAQLAQ IQAQIGALEE QLHQVRTETE GQKLEYEQLL DIKLHLEKEI ETYCLLIGGD DGACKSGGYK SKDYGSGNVG SQVKDPAKAI VVKVLEEVD QRSKILTTRL HSLEEKSSQN
Characteristics:	Human KRT25 full-length ORF (AAI46489.1, 1 a.a. - 450 a.a.) recombinant protein with GST-tag at N-terminal.

Product Details

Purification: in vitro wheat germ expression system

Target Details

Target: Keratin 25 (KRT25)

Alternative Name: KRT25 ([KRT25 Products](#))

Background: Full Gene Name: keratin 25
Synonyms: KRT25A

Gene ID: 147183

Application Details

Application Notes: Optimal working dilution should be determined by the investigator.

Comment: Preparation method: in vitro, wheat germ expression system
Product Quality tested by: 12.5% SDS-PAGE Stained with Coomassie Blue.

Restrictions: For Research Use only

Handling

Buffer: 50 mM Tris-HCl, 10 mM reduced Glutathione, pH =8.0 in the elution buffer.

Handling Advice: Aliquot to avoid repeated freezing and thawing.

Storage: -80 °C

Storage Comment: Best use within three months from the date of receipt of this protein.

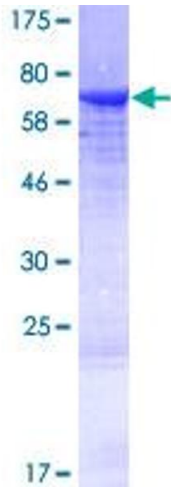


Image 1.