



[Go to Product page](#)

Datasheet for ABIN1308991

## KRT32 Protein (AA 1-448) (GST tag)

### 1 Image

#### Overview

Quantity:	10 µg
Target:	KRT32
Protein Characteristics:	AA 1-448
Origin:	Human
Source:	Wheat germ
Protein Type:	Recombinant
Purification tag / Conjugate:	This KRT32 protein is labelled with GST tag.
Application:	ELISA, Western Blotting (WB), Affinity Purification (AP), Antibody Array (AA)

#### Product Details

Purpose:	KRT32 (Human) Recombinant Protein (P01)
Sequence:	MTSSCCVTNN LQASLKSCPR PASVCSSGVN CRPELCLGYV CQPMACLPV CLPTTFRPAS CLSKTYLSSS CQAASGISGS MGPGSWYSEG AFNGNEKETM QFLNDRLAS Y LTRVRQLEQE NAELESRIQE ASHSQVLTMT PDYQSHFRTI EELQQKILCT KAENARMVVN IDNAKLAADD FRAKYEAELA MRQLVEADIN GLRRILDDLT LCKADLEAQV ESLKEELMCL KKNHEEEVGS LRCQLGDRLN IEVDAAPPVD LTRVLEEMRC QYEAMVEANR RDVEEWFNMQ MEELNQQVAT SSEQLQNYQS DIIDLRTVN TLEIELQAQH SLRDSLENTL TESEARYSSQ LAQMCMITN VEAQLAEIRA DLERQNQEYQ VLLDVRARLE GEINTYRSLLE ENEDCKLPCN PCSTPSCCTC VPSPCVPRTV CVPRTVGMPC SPCPQGRY
Characteristics:	Human KRT32 full-length ORF ( AAI48741.1, 1 a.a. - 448 a.a.) recombinant protein with GST-tag at N-terminal.

## Product Details

---

Purification: in vitro wheat germ expression system

## Target Details

---

Target: KRT32

Alternative Name: KRT32 ([KRT32 Products](#))

Background: Full Gene Name: keratin 32  
Synonyms: HA2,HKA2,KRTHA2,hHa2

Gene ID: 3882

## Application Details

---

Application Notes: Optimal working dilution should be determined by the investigator.

Comment: Preparation method: in vitro, wheat germ expression system  
Product Quality tested by: 12.5% SDS-PAGE Stained with Coomassie Blue.

Restrictions: For Research Use only

## Handling

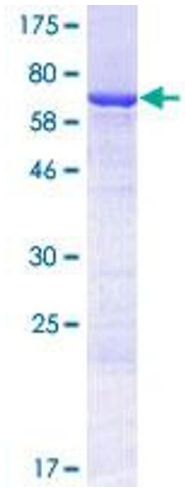
---

Buffer: 50 mM Tris-HCl, 10 mM reduced Glutathione, pH =8.0 in the elution buffer.

Handling Advice: Aliquot to avoid repeated freezing and thawing.

Storage: -80 °C

Storage Comment: Best use within three months from the date of receipt of this protein.



**Image 1.**