

Datasheet for ABIN1308993

Keratin 33B Protein (KRT33B) (AA 1-404) (GST tag)



[Go to Product page](#)

1 Image

Overview

Quantity:	10 µg
Target:	Keratin 33B (KRT33B)
Protein Characteristics:	AA 1-404
Origin:	Human
Source:	Wheat germ
Protein Type:	Recombinant
Purification tag / Conjugate:	This Keratin 33B protein is labelled with GST tag.
Application:	ELISA, Western Blotting (WB), Affinity Purification (AP), Antibody Array (AA)

Product Details

Purpose:	KRTHA3B (Human) Recombinant Protein (P01)
Sequence:	MPYNFCLPSL SCRTSCSSRP CVPPSCHGYT LPGACNIPAN VSNCNWFCEG SFNGSEKETM QFLNDRLAS Y LEKVRQLERD NAELENLIRE RSQQQEPLLC PSYQSYFKTI EELQQKILCS KSENRALVVQ IDNAKLAADD FRTKYQTEQS LRQLVESDIN SLRRILDELT LCRSDLEAQM ESLKEELLSL KQNHEQEVNT LRCQLGDRLN VEVDAAPAVD LNQVLNETRN QYEALVETNR REVEQWFATQ TEELNKQVVS SSEQLQSYQA EIIELRRTVN ALEIELQAQH NLRYSLENTL TESEARYSSQ LSQVQSLITN VESQLAEIRS DLERQNQEYQ VLLDVRARLE CEINTYRSL ESEDCKLPSN PCATTNACEK PIGSCVTNPC GPRSRCGPCN TFGY
Characteristics:	Human KRTHA3B full-length ORF (AAH09971, 1 a.a. - 404 a.a.) recombinant protein with GST-tag at N-terminal.
Purification:	in vitro wheat germ expression system

Target Details

Target:	Keratin 33B (KRT33B)
Alternative Name:	KRT33B (KRT33B Products)
Background:	Full Gene Name: keratin 33B Synonyms: HA3II,Ha-3II,KRTHA3A,KRTHA3B,hHa3-II
Gene ID:	3884

Application Details

Application Notes:	Optimal working dilution should be determined by the investigator.
Comment:	Preparation method: in vitro, wheat germ expression system Product Quality tested by: 12.5% SDS-PAGE Stained with Coomassie Blue.
Restrictions:	For Research Use only

Handling

Buffer:	50 mM Tris-HCl, 10 mM reduced Glutathione, pH =8.0 in the elution buffer.
Handling Advice:	Aliquot to avoid repeated freezing and thawing.
Storage:	-80 °C
Storage Comment:	Best use within three months from the date of receipt of this protein.

Images

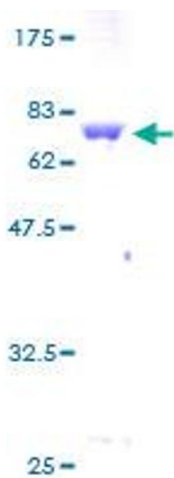


Image 1.