



[Go to Product page](#)

Datasheet for ABIN1309012

Cytokeratin 5 Protein (AA 1-590) (GST tag)

1 Image

Overview

Quantity:	10 µg
Target:	Cytokeratin 5 (KRT5)
Protein Characteristics:	AA 1-590
Origin:	Human
Source:	Wheat germ
Protein Type:	Recombinant
Purification tag / Conjugate:	This Cytokeratin 5 protein is labelled with GST tag.
Application:	Western Blotting (WB), ELISA, Affinity Purification (AP), Antibody Array (AA)

Product Details

Purpose:	KRT5 (Human) Recombinant Protein (P01)
Sequence:	MSRQSSVSFR SGGSRSFSTA SAITPSVSRT SFTSVSRSGG GGGGGFGRVS LAGACGVGGY GSRSLYNLGG SKRISISTSG GSFRNRFAG AGGGYGFGGG AGSGFGFGGG AGGGFGLGGG AGFGGGFGGP GFPVCPGGI QEVTVNQSL TPLNLQIDPS IQRVRTEERE QIKTLNNKFA SFIDKVRFLQ QQNKVLDTKW TLLQEQGTKT VRQNLPLFE QYINNLRRQL DSIVGERGRL DSELRNMQDL VEDFKNKYED EINKRTTAEN EFVMLKKDVD AAYMNKVELE AKVDALMDEI NFMKMFDAE LSQMQTHVSD TSVVLSMDNN RNLDLDSIIA EVKAQYEEIA NRSRTEAESW YQTKYEELQQ TAGRHGDDL NTKHEISEMN RMIQRLRAEI DNKKQCANL QNAIADAEQR GELALKDARN KLAELEEALQ KAKQDMARLL REYQELMNTK LALDVEIATY RKLLEGECCR LSGEGVGPVN ISVVTGSVSS GYGSGSGYGG GLGGGLGGGL GGGLAGGGSG SYSSSSGGV GLSGGLSVGG SGFSASSGRG LGVGFSGGGG SSSSVKRVST TSSSRKSFKS
Characteristics:	Human KRT5 full-length ORF (AAH24292, 1 a.a. - 590 a.a.) recombinant protein with GST-tag at

Product Details

N-terminal.

Purification: in vitro wheat germ expression system

Target Details

Target: Cytokeratin 5 (KRT5)

Alternative Name: KRT5 ([KRT5 Products](#))

Background: Full Gene Name: keratin 5
Synonyms: CK5,DDD,EBS2,K5,KRT5A

Gene ID: 3852

Application Details

Application Notes: Optimal working dilution should be determined by the investigator.

Comment: Preparation method: in vitro, wheat germ expression system
Product Quality tested by: 12.5% SDS-PAGE Stained with Coomassie Blue.

Restrictions: For Research Use only

Handling

Buffer: 50 mM Tris-HCl, 10 mM reduced Glutathione, pH =8.0 in the elution buffer.

Handling Advice: Aliquot to avoid repeated freezing and thawing.

Storage: -80 °C

Storage Comment: Best use within three months from the date of receipt of this protein.

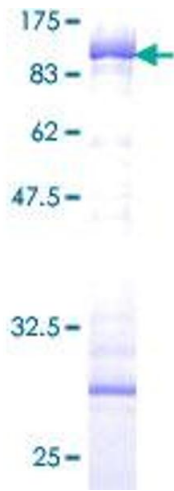


Image 1.