

Datasheet for ABIN1309014
KRT6A Protein (AA 1-564) (GST tag)



[Go to Product page](#)

1 Image

Overview

Quantity:	10 µg
Target:	KRT6A
Protein Characteristics:	AA 1-564
Origin:	Human
Source:	Wheat germ
Protein Type:	Recombinant
Purification tag / Conjugate:	This KRT6A protein is labelled with GST tag.
Application:	Western Blotting (WB), ELISA, Affinity Purification (AP), Antibody Array (AA)

Product Details

Purpose:	KRT6A (Human) Recombinant Protein (P01)
Sequence:	<p>MASTSTTIRS HSSRRGFSA NSARLPGVSR SGFSSVSVSR SRGSGGLGGA CGGAGFGSRS LYGLGGSKRI SIGGGSCAIS GYGSRAGGS YGFGGAGSGF GFGGGAGIGF GLGGGAGLAG GFGGPGFPVC PPGGIQEVTV NQSLTPLNL QIDPTIQRVR AEEREQIKTL NNKFASFIDK VRFLEQQNKV LETKWTLLE QGTKTVRQNL EPLFEQYINN LRRQLDSIVG ERGRLDSELR GMQDLVEDFK NKYEDEINKR TAAENEFVTL KKDVDAAAYMN KVELQAKADT LTDEINFLRA LYDAELSQMQ THISDTSVVL SMDNNRNLDL DSIIAEVKAQ YEEIAQRSRA EAESWYQTKY EELQVTAGRH GDDLNRNKQE IAEINRMIQR LRSEIDHVKK QCANLQAAIA DAEQRGEMAL KDAKNKLEGL EDALQKAKQD LARLLKEYQE LMNVKLALDV EIATYRKLLE GEECRLNGEG VGQVNISVVQ STVSSGYGGA SGVGSGLGLG GGSSYSYGS LGVGGGFSSS SGRAIGGGLS SVGGGSSTIK YTTTSSSRK SYKH</p>
Characteristics:	Human KRT6A full-length ORF (AAH08807.1, 1 a.a. - 564 a.a.) recombinant protein with GST-

Product Details

tag at N-terminal.

Purification: in vitro wheat germ expression system

Target Details

Target: KRT6A

Alternative Name: KRT6A ([KRT6A Products](#))

Background: Full Gene Name: keratin 6A
Synonyms: CK6A,CK6C,CK6D,K6A,K6C,K6D,KRT6C,KRT6D

Gene ID: 3853

Application Details

Application Notes: Optimal working dilution should be determined by the investigator.

Comment: Preparation method: in vitro, wheat germ expression system
Product Quality tested by: 12.5% SDS-PAGE Stained with Coomassie Blue.

Restrictions: For Research Use only

Handling

Buffer: 50 mM Tris-HCl, 10 mM reduced Glutathione, pH =8.0 in the elution buffer.

Handling Advice: Aliquot to avoid repeated freezing and thawing.

Storage: -80 °C

Storage Comment: Best use within three months from the date of receipt of this protein.

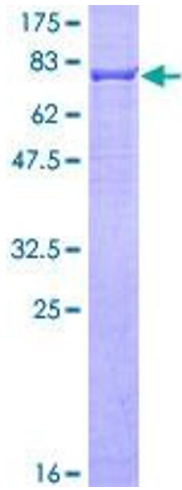


Image 1.